



Cable ID: 70191-1

Date / Time: 05/10/2019 03:24:05 PM

Headroom 19.1 dB (NEXT 36-45)

Test Limit: TIA Cat 5e Channel

Cable Type: Cat 5e U/UTP

NVP: 69.0%

Operator: HONESTY

Software Version: V6.1 Build 3

Limits Version: V7.1

Calibration Date:

Main (Module): 02/06/2018

Remote (Module): 02/06/2018

Test Summary: PASS

Model: DSX-8000

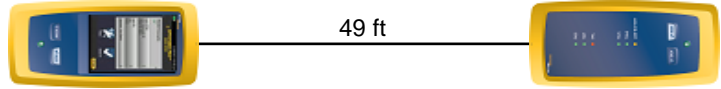
Main S/N: 1803463

Remote S/N: 1803429

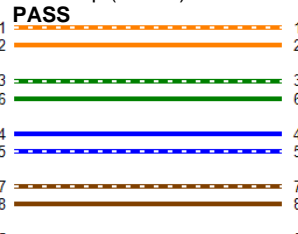
Main Adapter: DSX-CHA804

Remote Adapter: DSX-CHA804

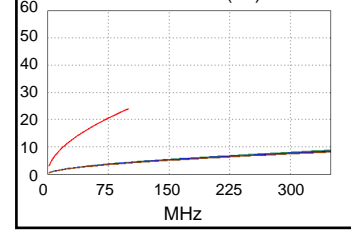
Length (ft), Limit 328	[Pair 12]	49
Prop. Delay (ns), Limit 555	[Pair 36]	77
Delay Skew (ns), Limit 50	[Pair 36]	2
Resistance (ohms)	[Pair 45]	2.54
Insertion Loss Margin (dB)	[Pair 36]	19.7
Frequency (MHz)	[Pair 36]	100.0
Limit (dB)	[Pair 36]	24.0



Wire Map (T568B)

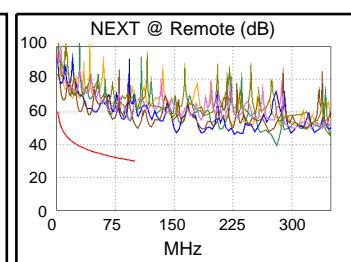
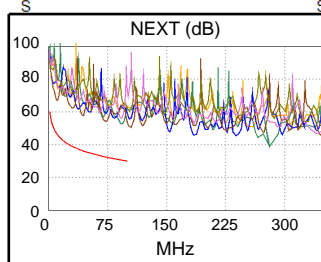


Insertion Loss (dB)

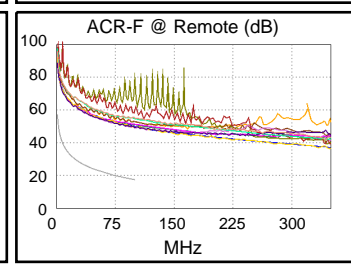
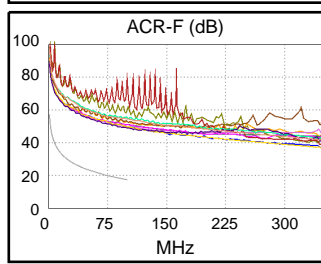


Worst Case Margin Worst Case Value

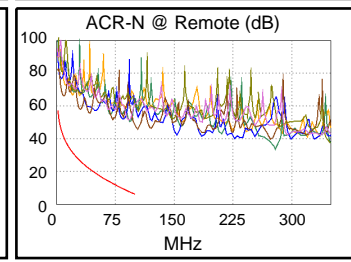
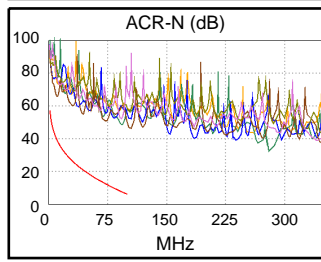
PASS	MAIN	SR	MAIN	SR
Worst Pair	36-45	36-45	12-45	36-45
NEXT (dB)	20.3	19.1	22.1	22.3
Freq. (MHz)	10.3	8.3	93.5	100.0
Limit (dB)	46.8	48.4	30.6	30.1
Worst Pair	36	36	45	45
PS NEXT (dB)	22.7	21.7	23.3	24.0
Freq. (MHz)	10.3	8.3	93.0	93.8
Limit (dB)	43.8	45.4	27.6	27.6



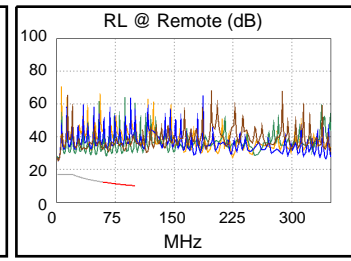
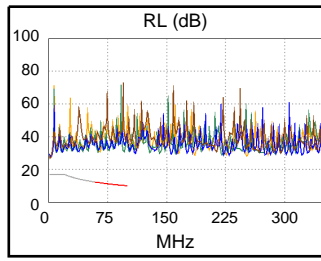
PASS	MAIN	SR	MAIN	SR
Worst Pair	78-36	36-78	78-36	36-78
ACR-F (dB)	31.2	31.3	31.3	31.6
Freq. (MHz)	88.5	20.8	100.0	100.0
Limit (dB)	18.5	31.1	17.4	17.4
Worst Pair	12	12	78	78
PS ACR-F (dB)	30.4	30.7	31.6	31.4
Freq. (MHz)	3.4	3.8	100.0	100.0
Limit (dB)	43.8	42.9	14.4	14.4



N/A	MAIN	SR	MAIN	SR
Worst Pair	36-45	36-45	12-45	36-45
ACR-N (dB)	26.3	24.2	41.3	42.2
Freq. (MHz)	10.3	7.4	93.5	100.0
Limit (dB)	39.6	43.1	7.4	6.1
Worst Pair	36	36	45	45
PS ACR-N (dB)	28.7	26.5	42.4	43.2
Freq. (MHz)	10.3	1.6	93.0	93.8
Limit (dB)	36.6	53.9	4.5	4.4



PASS	MAIN	SR	MAIN	SR
Worst Pair	36	36	12	36
RL (dB)	18.5	16.3	18.6	16.3
Freq. (MHz)	62.5	63.5	64.8	63.5
Limit (dB)	12.1	12.0	11.9	12.0



Compliant Network Standards:

10BASE-T	100BASE-TX	100BASE-T4
1000BASE-T	2.5GBASE-T	ATM-25
ATM-51	ATM-155	100VG-AnyLan
TR-4	TR-16 Active	TR-16 Passive



Cable ID: 70191-2

Date / Time: 05/10/2019 03:24:58 PM

Headroom 19.0 dB (NEXT 36-45)

Test Limit: TIA Cat 5e Channel

Cable Type: Cat 5e U/UTP

NVP: 69.0%

Operator: HONESTY

Software Version: V6.1 Build 3

Limits Version: V7.1

Calibration Date:

Main (Module): 02/06/2018

Remote (Module): 02/06/2018

Test Summary: PASS

Model: DSX-8000

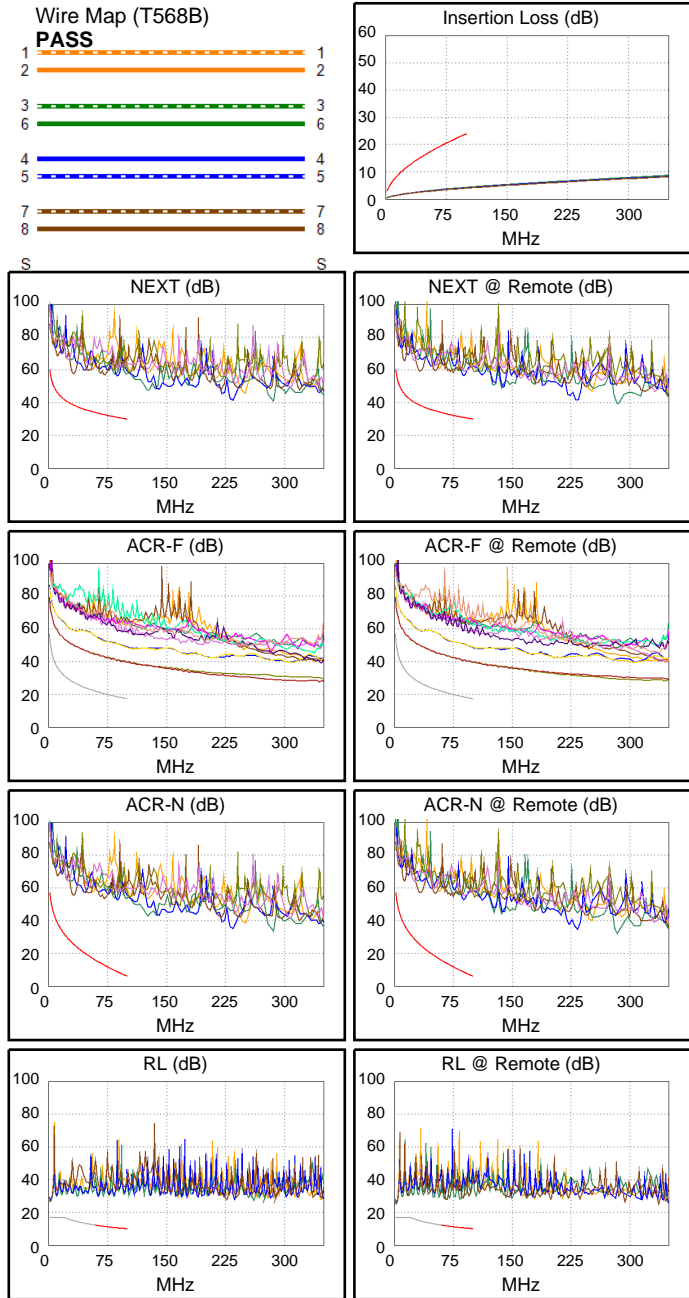
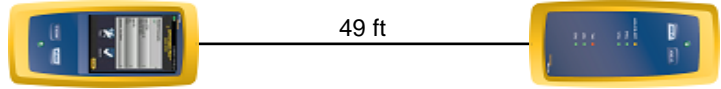
Main S/N: 1803463

Remote S/N: 1803429

Main Adapter: DSX-CHA804

Remote Adapter: DSX-CHA804

Length (ft), Limit 328	[Pair 12]	49
Prop. Delay (ns), Limit 555	[Pair 36]	77
Delay Skew (ns), Limit 50	[Pair 36]	2
Resistance (ohms)	[Pair 36]	2.53
Insertion Loss Margin (dB)	[Pair 36]	19.7
Frequency (MHz)	[Pair 36]	100.0
Limit (dB)	[Pair 36]	24.0



Worst Case Margin Worst Case Value

PASS	MAIN	SR	MAIN	SR
Worst Pair	36-45	36-45	12-78	12-78
NEXT (dB)	19.0	20.1	25.3	25.6
Freq. (MHz)	31.8	12.1	87.8	88.8
Limit (dB)	38.6	45.6	31.1	31.0
Worst Pair	45	36	12	78
PS NEXT (dB)	21.6	22.6	26.2	26.5
Freq. (MHz)	31.8	12.1	87.3	88.0
Limit (dB)	35.6	42.6	28.1	28.0

PASS	MAIN	SR	MAIN	SR
Worst Pair	36-45	45-36	45-36	45-36
ACR-F (dB)	21.9	21.9	22.2	22.1
Freq. (MHz)	7.6	7.6	100.0	100.0
Limit (dB)	39.8	39.8	17.4	17.4
Worst Pair	36	45	36	36
PS ACR-F (dB)	24.3	24.4	25.1	25.0
Freq. (MHz)	1.9	1.9	100.0	100.0
Limit (dB)	48.9	48.9	14.4	14.4

N/A	MAIN	SR	MAIN	SR
Worst Pair	36-78	36-45	12-78	12-78
ACR-N (dB)	28.1	26.6	44.0	44.4
Freq. (MHz)	1.5	12.1	87.8	88.8
Limit (dB)	57.0	37.8	8.7	8.5
Worst Pair	36	36	12	78
PS ACR-N (dB)	28.3	26.8	44.8	45.2
Freq. (MHz)	1.3	1.6	87.3	88.0
Limit (dB)	54.0	53.9	5.8	5.6

PASS	MAIN	SR	MAIN	SR
Worst Pair	45	78	36	36
RL (dB)	17.8	15.8	19.0	16.7
Freq. (MHz)	63.3	66.3	83.3	83.8
Limit (dB)	12.0	11.8	10.8	10.8

Compliant Network Standards:
 10BASE-T 100BASE-TX 100BASE-T4
 1000BASE-T 2.5GBASE-T ATM-25
 ATM-51 ATM-155 100VG-AnyLan
 TR-4 TR-16 Active TR-16 Passive



Cable ID: 70191-3

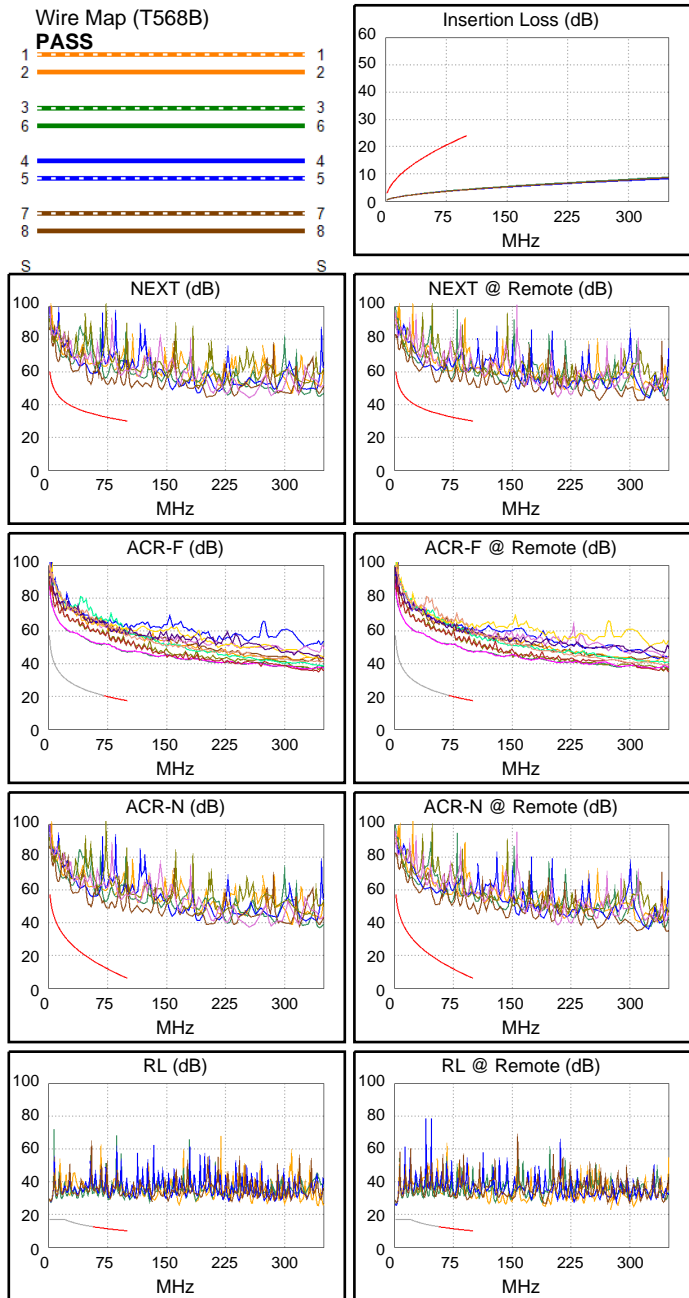
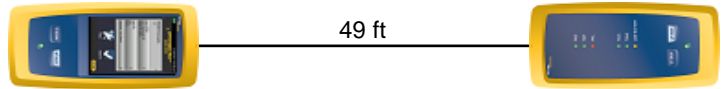
Date / Time: 05/10/2019 03:26:12 PM
Headroom 17.8 dB (NEXT 36-45)
Test Limit: TIA Cat 5e Channel
 Cable Type: Cat 5e U/UTP
 NVP: 69.0%

Operator: HONESTY
 Software Version: V6.1 Build 3
 Limits Version: V7.1
 Calibration Date:
 Main (Module): 02/06/2018
 Remote (Module): 02/06/2018

Test Summary: PASS

Model: DSX-8000
 Main S/N: 1803463
 Remote S/N: 1803429
 Main Adapter: DSX-CHA804
 Remote Adapter: DSX-CHA804

Length (ft), Limit 328	[Pair 12]	49
Prop. Delay (ns), Limit 555	[Pair 36]	77
Delay Skew (ns), Limit 50	[Pair 36]	2
Resistance (ohms)	[Pair 45]	2.53
Insertion Loss Margin (dB)	[Pair 36]	19.7
Frequency (MHz)	[Pair 36]	100.0
Limit (dB)	[Pair 36]	24.0



Worst Case Margin Worst Case Value

PASS	MAIN	SR	MAIN	SR
Worst Pair	36-45	36-45	36-45	36-45
NEXT (dB)	17.8	19.0	20.8	21.8
Freq. (MHz)	53.8	53.3	94.5	96.0
Limit (dB)	34.7	34.8	30.5	30.4
Worst Pair	36	36	45	36
PS NEXT (dB)	20.6	21.7	23.1	24.2
Freq. (MHz)	53.8	52.8	94.5	96.0
Limit (dB)	31.7	31.8	27.5	27.4

PASS	MAIN	SR	MAIN	SR
Worst Pair	12-45	45-12	12-45	45-12
ACR-F (dB)	29.5	29.5	29.5	29.5
Freq. (MHz)	100.0	100.0	100.0	100.0
Limit (dB)	17.4	17.4	17.4	17.4
Worst Pair	45	45	45	45
PS ACR-F (dB)	31.1	31.4	31.2	31.5
Freq. (MHz)	99.3	99.0	99.5	99.5
Limit (dB)	14.5	14.5	14.4	14.4

N/A	MAIN	SR	MAIN	SR
Worst Pair	36-45	36-45	36-45	36-45
ACR-N (dB)	27.2	24.2	40.1	41.3
Freq. (MHz)	11.8	1.5	94.5	96.0
Limit (dB)	38.1	57.0	7.2	6.9
Worst Pair	36	36	45	36
PS ACR-N (dB)	28.8	25.8	42.4	43.5
Freq. (MHz)	1.1	1.5	94.5	96.0
Limit (dB)	54.0	54.0	4.2	3.9

PASS	MAIN	SR	MAIN	SR
Worst Pair	36	78	36	78
RL (dB)	17.5	18.6	17.5	18.6
Freq. (MHz)	76.8	93.0	76.8	93.0
Limit (dB)	11.2	10.3	11.2	10.3

Compliant Network Standards:
 10BASE-T 100BASE-TX 100BASE-T4
 1000BASE-T 2.5GBASE-T ATM-25
 ATM-51 ATM-155 100VG-AnyLan
 TR-4 TR-16 Active TR-16 Passive



Cable ID: 70191-4

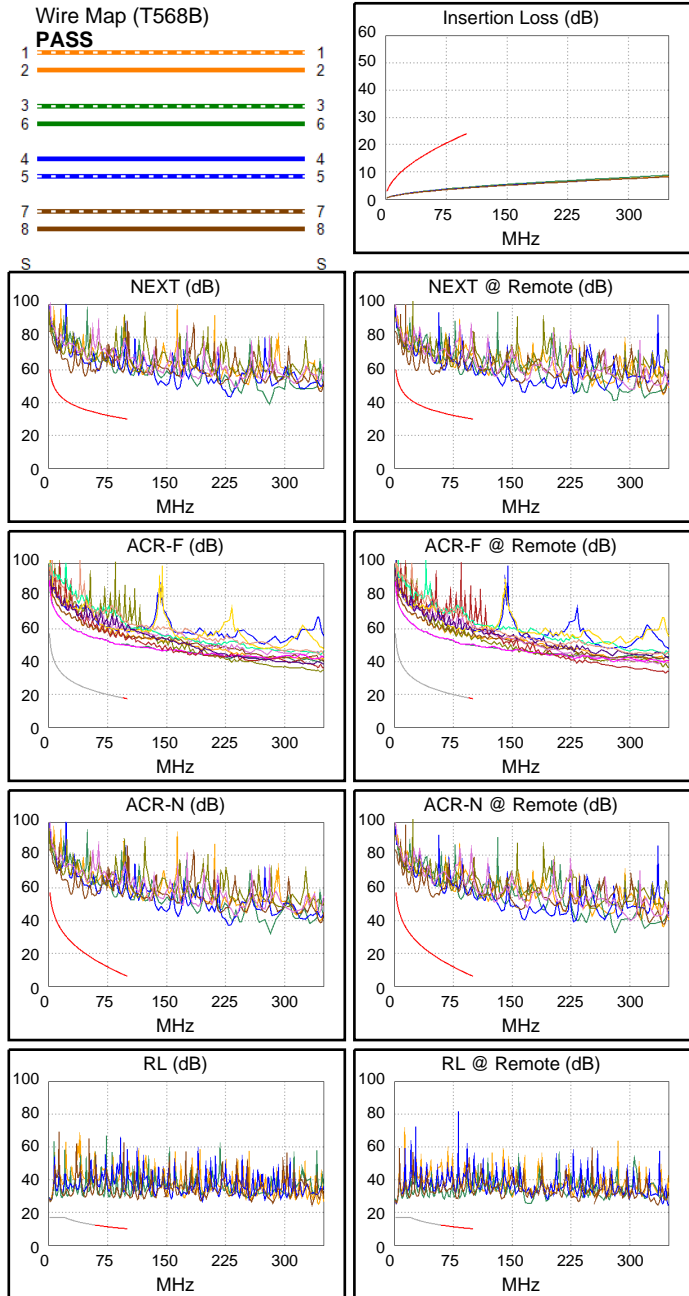
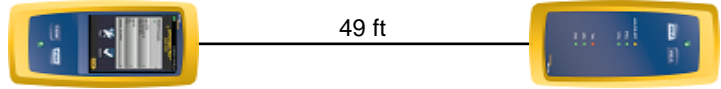
Date / Time: 05/10/2019 03:27:04 PM
Headroom 18.8 dB (NEXT 36-45)
Test Limit: TIA Cat 5e Channel
 Cable Type: Cat 5e U/UTP
 NVP: 69.0%

Operator: HONESTY
 Software Version: V6.1 Build 3
 Limits Version: V7.1
 Calibration Date:
 Main (Module): 02/06/2018
 Remote (Module): 02/06/2018

Test Summary: PASS

Model: DSX-8000
 Main S/N: 1803463
 Remote S/N: 1803429
 Main Adapter: DSX-CHA804
 Remote Adapter: DSX-CHA804

Length (ft), Limit 328	[Pair 12]	49
Prop. Delay (ns), Limit 555	[Pair 36]	77
Delay Skew (ns), Limit 50	[Pair 36]	2
Resistance (ohms)	[Pair 36]	2.53
Insertion Loss Margin (dB)	[Pair 36]	19.7
Frequency (MHz)	[Pair 36]	100.0
Limit (dB)	[Pair 36]	24.0



Worst Case Margin Worst Case Value

PASS	MAIN	SR	MAIN	SR
Worst Pair	36-45	36-45	36-45	12-45
NEXT (dB)	18.8	20.1	20.6	25.6
Freq. (MHz)	28.6	27.8	46.8	84.5
Limit (dB)	39.4	39.6	35.7	31.3
Worst Pair	36	36	36	45
PS NEXT (dB)	21.3	22.6	23.2	27.8
Freq. (MHz)	28.6	28.1	47.0	83.5
Limit (dB)	36.4	36.5	32.7	28.4

PASS	MAIN	SR	MAIN	SR
Worst Pair	12-45	12-45	45-12	12-45
ACR-F (dB)	31.8	31.8	32.5	32.5
Freq. (MHz)	84.5	84.5	98.5	98.5
Limit (dB)	18.9	18.9	17.5	17.5
Worst Pair	12	12	12	45
PS ACR-F (dB)	32.6	32.1	33.8	33.7
Freq. (MHz)	1.4	1.5	98.5	98.5
Limit (dB)	51.6	50.9	14.5	14.5

N/A	MAIN	SR	MAIN	SR
Worst Pair	36-45	36-45	36-45	12-45
ACR-N (dB)	25.2	25.3	33.8	43.8
Freq. (MHz)	1.3	1.6	46.8	84.5
Limit (dB)	57.0	56.9	19.8	9.4
Worst Pair	36	36	36	45
PS ACR-N (dB)	27.0	26.8	36.4	45.8
Freq. (MHz)	1.8	1.6	47.0	83.5
Limit (dB)	53.4	53.9	16.7	6.7

PASS	MAIN	SR	MAIN	SR
Worst Pair	78	36	78	78
RL (dB)	18.1	16.2	18.6	17.1
Freq. (MHz)	82.3	63.3	91.0	79.5
Limit (dB)	10.9	12.0	10.4	11.0

Compliant Network Standards:
 10BASE-T 100BASE-TX 100BASE-T4
 1000BASE-T 2.5GBASE-T ATM-25
 ATM-51 ATM-155 100VG-AnyLan
 TR-4 TR-16 Active TR-16 Passive



Cable ID: 70191-5

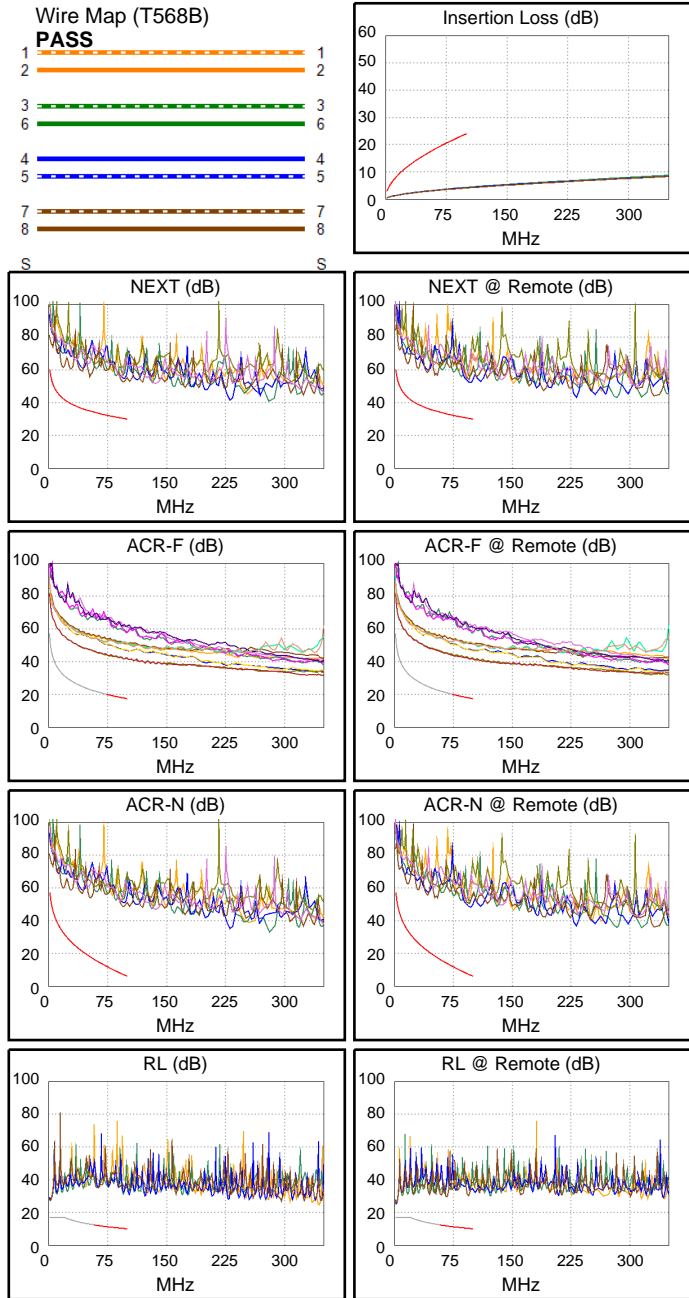
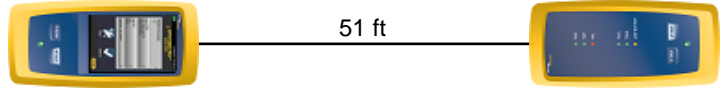
Date / Time: 05/10/2019 03:28:03 PM
Headroom 18.9 dB (NEXT 36-45)
Test Limit: TIA Cat 5e Channel
 Cable Type: Cat 5e U/UTP
 NVP: 69.0%

Operator: HONESTY
 Software Version: V6.1 Build 3
 Limits Version: V7.1
 Calibration Date:
 Main (Module): 02/06/2018
 Remote (Module): 02/06/2018

Test Summary: PASS

Model: DSX-8000
 Main S/N: 1803463
 Remote S/N: 1803429
 Main Adapter: DSX-CHA804
 Remote Adapter: DSX-CHA804

Length (ft), Limit 328	[Pair 12]	51
Prop. Delay (ns), Limit 555	[Pair 36]	77
Delay Skew (ns), Limit 50	[Pair 36]	2
Resistance (ohms)	[Pair 36]	2.54
Insertion Loss Margin (dB)	[Pair 36]	19.8
Frequency (MHz)	[Pair 36]	100.0
Limit (dB)	[Pair 36]	24.0



Worst Case Margin Worst Case Value

PASS	MAIN	SR	MAIN	SR
Worst Pair	36-45	36-45	36-45	12-78
NEXT (dB)	18.9	20.6	21.3	22.0
Freq. (MHz)	18.1	16.3	95.8	97.0
Limit (dB)	42.7	43.5	30.4	30.3
Worst Pair	45	12	45	12
PS NEXT (dB)	21.3	22.6	22.9	22.7
Freq. (MHz)	18.1	94.8	95.8	95.5
Limit (dB)	39.7	27.5	27.4	27.4

PASS	MAIN	SR	MAIN	SR
Worst Pair	36-45	45-36	45-36	45-36
ACR-F (dB)	23.5	23.4	23.9	23.9
Freq. (MHz)	4.6	4.6	96.3	96.5
Limit (dB)	44.1	44.1	17.7	17.7
Worst Pair	45	45	36	36
PS ACR-F (dB)	25.9	25.9	26.4	26.5
Freq. (MHz)	4.6	4.6	96.3	96.5
Limit (dB)	41.1	41.1	14.7	14.7

N/A	MAIN	SR	MAIN	SR
Worst Pair	36-45	36-45	36-45	12-78
ACR-N (dB)	21.5	26.2	40.7	41.8
Freq. (MHz)	1.6	5.4	95.8	97.5
Limit (dB)	56.9	46.3	7.0	6.6
Worst Pair	45	36	36	12
PS ACR-N (dB)	24.0	28.0	42.3	42.4
Freq. (MHz)	1.6	1.5	95.8	96.3
Limit (dB)	53.9	54.0	4.0	3.8

PASS	MAIN	SR	MAIN	SR
Worst Pair	36	78	36	78
RL (dB)	21.1	17.4	21.1	17.4
Freq. (MHz)	95.0	66.8	95.0	66.8
Limit (dB)	10.2	11.8	10.2	11.8

Compliant Network Standards:
 10BASE-T 100BASE-TX 100BASE-T4
 1000BASE-T 2.5GBASE-T ATM-25
 ATM-51 ATM-155 100VG-AnyLan
 TR-4 TR-16 Active TR-16 Passive



Cable ID: 70191-6

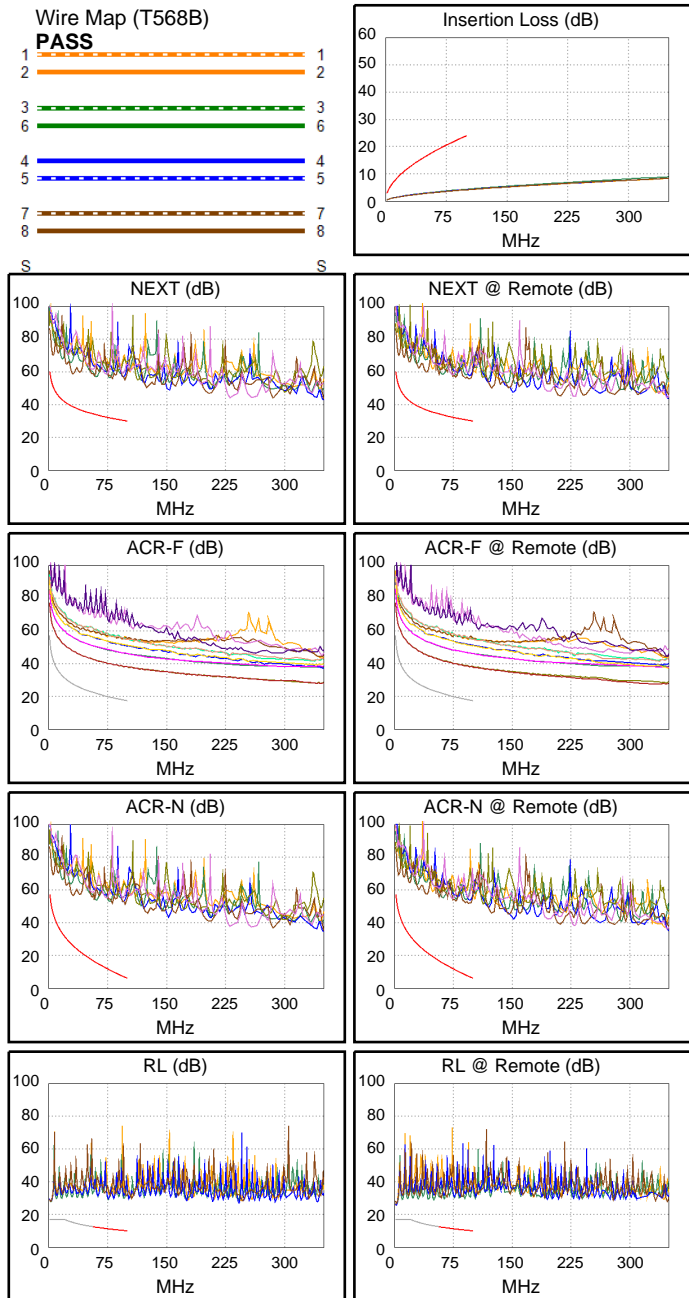
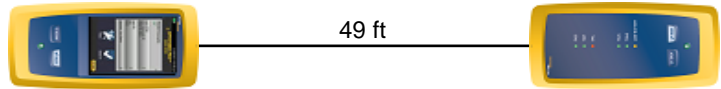
Date / Time: 05/10/2019 03:28:35 PM
Headroom 18.4 dB (NEXT 36-45)
Test Limit: TIA Cat 5e Channel
 Cable Type: Cat 5e U/UTP
 NVP: 69.0%

Operator: HONESTY
 Software Version: V6.1 Build 3
 Limits Version: V7.1
 Calibration Date:
 Main (Module): 02/06/2018
 Remote (Module): 02/06/2018

Test Summary: PASS

Model: DSX-8000
 Main S/N: 1803463
 Remote S/N: 1803429
 Main Adapter: DSX-CHA804
 Remote Adapter: DSX-CHA804

Length (ft), Limit 328	[Pair 12]	49
Prop. Delay (ns), Limit 555	[Pair 36]	77
Delay Skew (ns), Limit 50	[Pair 36]	2
Resistance (ohms)	[Pair 45]	2.53
Insertion Loss Margin (dB)	[Pair 36]	19.7
Frequency (MHz)	[Pair 36]	100.0
Limit (dB)	[Pair 36]	24.0



Worst Case Margin Worst Case Value

PASS	MAIN	SR	MAIN	SR
Worst Pair	36-45	36-45	36-45	36-45
NEXT (dB)	18.5	18.4	24.4	25.0
Freq. (MHz)	5.0	4.5	96.3	96.3
Limit (dB)	52.0	52.7	30.4	30.4
Worst Pair	36	36	45	45
PS NEXT (dB)	21.2	21.2	25.5	25.7
Freq. (MHz)	5.0	5.0	96.3	94.3
Limit (dB)	49.0	49.0	27.4	27.5

PASS	MAIN	SR	MAIN	SR
Worst Pair	45-36	36-45	45-36	45-36
ACR-F (dB)	19.6	19.6	20.4	20.6
Freq. (MHz)	4.8	4.8	96.5	100.0
Limit (dB)	43.9	43.9	17.7	17.4
Worst Pair	45	45	45	45
PS ACR-F (dB)	22.0	21.9	23.1	22.8
Freq. (MHz)	4.8	4.8	100.0	96.5
Limit (dB)	40.9	40.9	14.4	14.7

N/A	MAIN	SR	MAIN	SR
Worst Pair	36-45	36-45	36-45	36-45
ACR-N (dB)	22.7	22.4	43.9	44.5
Freq. (MHz)	5.0	4.5	96.3	96.3
Limit (dB)	47.0	48.0	6.8	6.8
Worst Pair	36	36	45	45
PS ACR-N (dB)	25.4	25.1	45.0	44.9
Freq. (MHz)	5.0	4.5	96.3	94.3
Limit (dB)	44.0	45.0	3.8	4.3

PASS	MAIN	SR	MAIN	SR
Worst Pair	36	36	36	36
RL (dB)	17.8	16.0	17.8	16.0
Freq. (MHz)	76.0	50.8	76.0	50.8
Limit (dB)	11.2	13.0	11.2	13.0

Compliant Network Standards:
 10BASE-T 100BASE-TX 100BASE-T4
 1000BASE-T 2.5GBASE-T ATM-25
 ATM-51 ATM-155 100VG-AnyLan
 TR-4 TR-16 Active TR-16 Passive