



Cable ID: CAT6-SFTP-2FT

Date / Time: 10/31/2018 05:13:36 PM

Headroom 27.1 dB (NEXT 36-78)

Test Limit: TIA Cat 6 Channel

Cable Type: Cat 6 S/FTP

NVP: 70.0%

Operator: KARIM

Software Version: 2.7800

Limits Version: 1.9500

Calibration Date:

Main (Tester): 11/01/2016

Remote (Tester): 11/01/2016

Test Summary: PASS

Model: DTX-1800

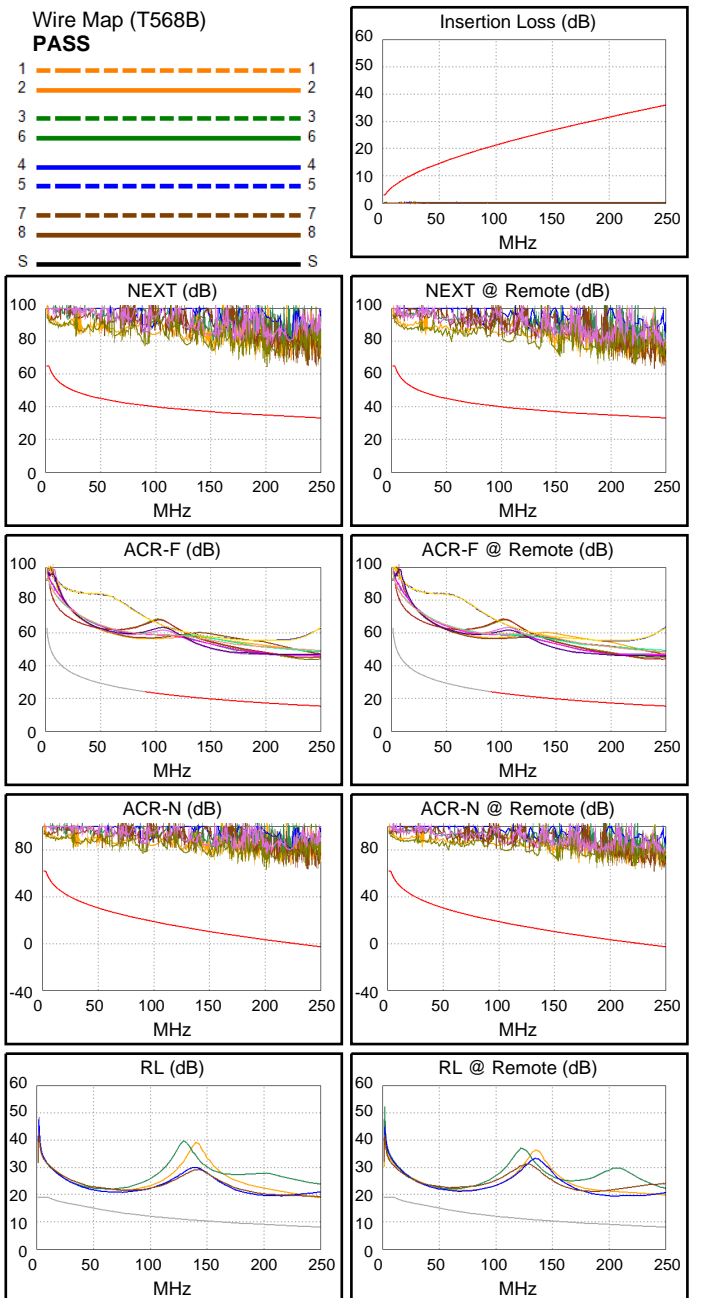
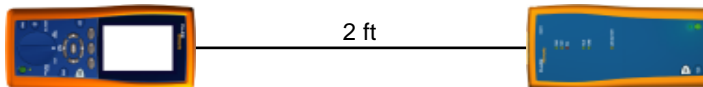
Main S/N: 3178039

Remote S/N: 3178046

Main Adapter: DTX-CHA002

Remote Adapter: DTX-CHA002

Length (ft), Limit 328	[Pair 12]	2
Prop. Delay (ns), Limit 555	[Pair 12]	2
Delay Skew (ns), Limit 50	[Pair 12]	0
Resistance (ohms)	[Pair 12]	0.2
Insertion Loss Margin (dB)	[Pair 12]	35.7
Frequency (MHz)	[Pair 12]	250.0
Limit (dB)	[Pair 12]	35.9



Worst Case Margin Worst Case Value

PASS	MAIN	SR	MAIN	SR
Worst Pair	36-78	36-78	36-45	36-45
NEXT (dB)	27.3	27.1	33.1	32.4
Freq. (MHz)	2.4	2.9	245.5	225.0
Limit (dB)	65.0	65.0	33.3	33.9
Worst Pair	36	36	36	36
PS NEXT (dB)	26.5	27.2	35.7	33.4
Freq. (MHz)	3.0	3.3	245.5	221.5
Limit (dB)	62.0	62.0	30.3	31.1

PASS	MAIN	SR	MAIN	SR
Worst Pair	36-45	45-36	36-45	45-36
ACR-F (dB)	28.2	28.2	28.3	28.3
Freq. (MHz)	228.0	228.5	242.5	242.5
Limit (dB)	16.1	16.1	15.6	15.6
Worst Pair	45	36	45	36
PS ACR-F (dB)	28.5	28.2	28.6	28.4
Freq. (MHz)	216.0	229.0	238.5	247.0
Limit (dB)	13.6	13.1	12.7	12.4

N/A	MAIN	SR	MAIN	SR
Worst Pair	36-78	36-78	36-45	36-45
ACR-N (dB)	30.3	30.5	68.5	66.0
Freq. (MHz)	2.4	2.9	245.5	225.0
Limit (dB)	61.9	61.6	-2.3	0.1
Worst Pair	36	36	36	36
PS ACR-N (dB)	30.0	30.7	71.2	66.8
Freq. (MHz)	3.0	2.9	245.5	221.5
Limit (dB)	58.5	58.6	-5.3	-2.4

N/A	MAIN	SR	MAIN	SR
Worst Pair	45	45	12	45
RL (dB)	6.6	6.9	10.8	10.4
Freq. (MHz)	47.0	47.3	247.5	204.0
Limit (dB)	15.3	15.3	8.1	8.9

Compliant Network Standards:
 10BASE-T 100BASE-TX 100BASE-T4
 1000BASE-T ATM-25 ATM-51
 ATM-155 100VG-AnyLan TR-4
 TR-16 Active TR-16 Passive