



Cable ID: 13-FUTP-CAT6-PVC-PE-90.4m

Test Limit: TIA Cat 6 Perm. Link (+All)

Limits Version: V7.5

Date / Time: 02/25/2021 11:28:45 AM

Headroom 4.3 dB (NEXT 3,6-4,5)

Cable Type: Cat 6 F/UTP

NVP: 67.0%

Main: Versiv

S/N: 2044074

Software Version: V6.5 Build 5

Calibration Date: 02/24/2021

Adapter: DSX-8000 (DSX-PLA804)

S/N: 21049959

Remote: Versiv

S/N: 2039444

Software Version: V6.5 Build 5

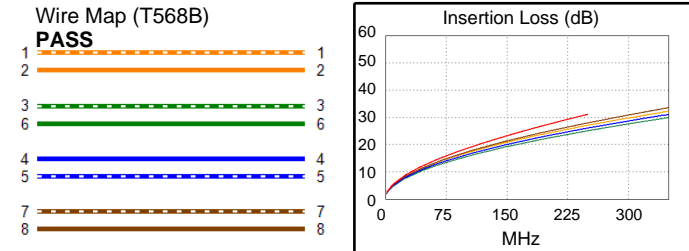
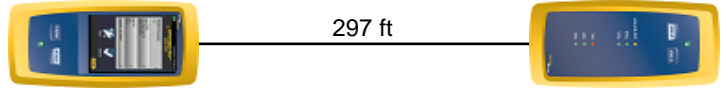
Calibration Date: 02/24/2021

Adapter: DSX-8000R (DSX-PLA804)

S/N: 21049956

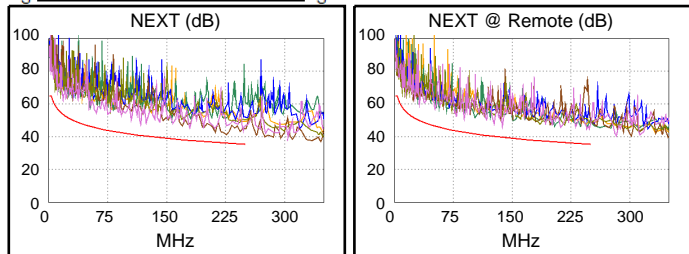
Test Summary: PASS

Length (ft), Limit 295	[Pair 3,6]	297
Prop. Delay (ns), Limit 498	[Pair 1,2]	489
Delay Skew (ns), Limit 44	[Pair 1,2]	39
Resistance (ohms), Limit 21.00	[Pair 1,2]	13.71
Resist. Unbal. (ohms), Limit 0.390	[Pair 4,5]	0.037
Resist. P2P Unbal. (ohms), Limit 0.470	[Pair 1,2-3,6]	0.200
Insertion Loss Margin (dB)	[Pair 7,8]	3.1
Frequency (MHz)	[Pair 7,8]	250.0
Limit (dB)	[Pair 7,8]	31.1

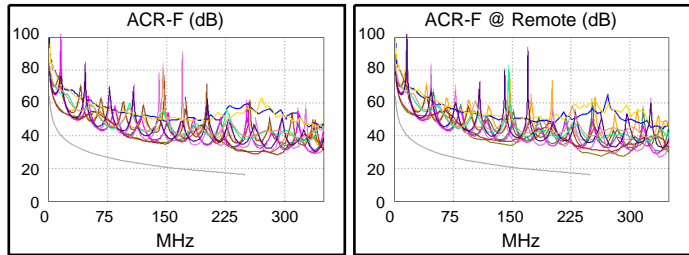


Worst Case Margin Worst Case Value

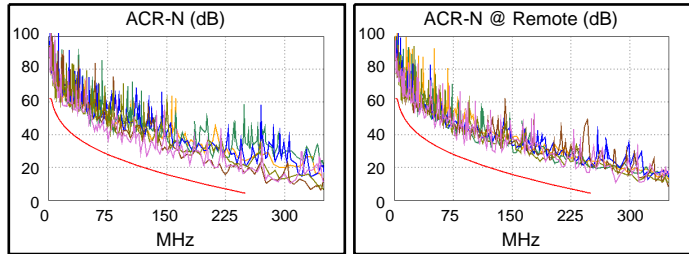
PASS	MAIN	SR	MAIN	SR
Worst Pair	3,6-4,5	4,5-7,8	3,6-4,5	4,5-7,8
NEXT (dB)	4.3	6.7	4.3	9.1
Freq. (MHz)	224.5	137.5	224.5	245.5
Limit (dB)	36.1	39.6	36.1	35.5
Worst Pair	4,5	7,8	4,5	4,5
PS NEXT (dB)	6.0	8.2	6.0	9.3
Freq. (MHz)	224.5	137.5	224.5	245.5
Limit (dB)	33.5	37.0	33.5	32.8



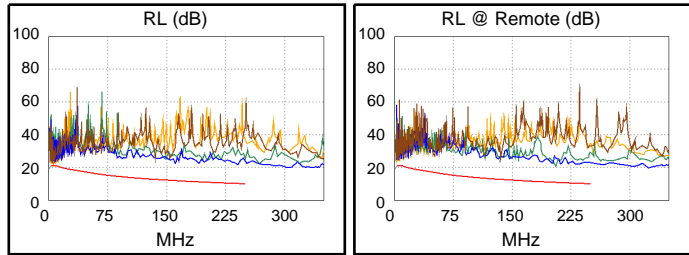
PASS	MAIN	SR	MAIN	SR
Worst Pair	4,5-3,6	3,6-4,5	4,5-3,6	3,6-4,5
ACR-F (dB)	14.0	13.0	14.2	13.1
Freq. (MHz)	243.5	243.5	250.0	250.0
Limit (dB)	16.5	16.5	16.2	16.2
Worst Pair	3,6	4,5	3,6	4,5
PS ACR-F (dB)	14.6	14.3	15.0	14.7
Freq. (MHz)	1.1	132.0	243.5	241.0
Limit (dB)	60.2	18.8	13.5	13.5



N/A	MAIN	SR	MAIN	SR
Worst Pair	4,5-7,8	4,5-7,8	3,6-4,5	4,5-7,8
ACR-N (dB)	7.7	8.5	8.8	12.5
Freq. (MHz)	124.5	137.5	224.5	248.5
Limit (dB)	19.3	17.4	6.9	4.4
Worst Pair	7,8	7,8	7,8	7,8
PS ACR-N (dB)	10.0	9.8	12.7	12.9
Freq. (MHz)	124.5	78.5	247.5	248.5
Limit (dB)	16.8	24.8	1.9	1.8



PASS	MAIN	SR	MAIN	SR
Worst Pair	7,8	1,2	4,5	3,6
RL (dB)	3.3	5.0	10.4	9.8
Freq. (MHz)	5.8	5.6	239.5	206.0
Limit (dB)	21.0	21.0	10.2	10.9



Compliant Network Standards:

10BASE-T	100BASE-TX	100BASE-T4
1000BASE-T	2.5GBASE-T	5GBASE-T
ATM-25	ATM-155	ATM-155
100VG-AnyLan	TR-4	TR-16 Active
TR-16 Passive		



Cable ID: 13-FUTP-CAT6-PVC-PE-90.4m

Test Limit: TIA Cat 6 Perm. Link (+All)

Limits Version: V7.5

Date / Time: 02/25/2021 11:28:45 AM

Headroom 4.3 dB (NEXT 3,6-4,5)

Cable Type: Cat 6 F/UTP

NVP: 67.0%

Main: Versiv

S/N: 2044074

Software Version: V6.5 Build 5

Calibration Date: 02/24/2021

Adapter: DSX-8000 (DSX-PLA804)

S/N: 21049959

Test Summary: PASS

Remote: Versiv

S/N: 2039444

Software Version: V6.5 Build 5

Calibration Date: 02/24/2021

Adapter: DSX-8000R (DSX-PLA804)

S/N: 21049956

	Worst Case Margin		Worst Case Value	
	MAIN	SR	MAIN	SR
PASS				
Worst Pair	3,6	4,5	3,6	4,5
TCL (dB)	5.6	12.4	5.6	12.8
Freq. (MHz)	212.5	132.5	212.5	199.0
Limit (dB)	15.1	18.2	15.1	15.5
N/A				
Worst Pair			1,2-3,6	1,2-3,6
CDNEXT (dB)			19.4	22.1
Freq. (MHz)			346.0	348.0
Limit (dB)				
N/A				
Worst Pair			3,6	3,6
CMRL (dB)			7.6	10.9
Freq. (MHz)			343.0	302.0
Limit (dB)				
PASS				
Worst Pair	4,5	4,5	4,5	4,5
ELTCTL (dB)	19.8	18.2	22.0	20.8
Freq. (MHz)	7.9	7.3	12.5	12.5
Limit (dB)	12.1	12.8	8.1	8.1

