



Cable ID: 70192-1

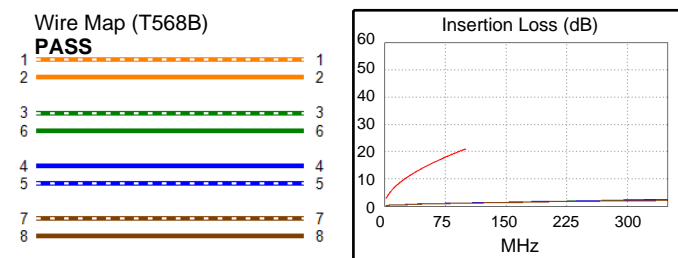
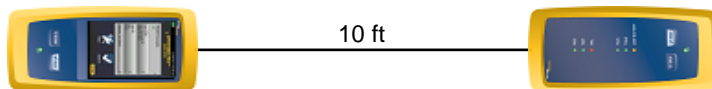
Date / Time: 05/10/2019 02:32:00 PM
Headroom 16.0 dB (NEXT 12-45)
Test Limit: TIA Cat 5e Perm. Link
 Cable Type: Cat 5e U/UTP
 NVP: 69.0%

Operator: HONESTY
 Software Version: V6.1 Build 3
 Limits Version: V7.1
 Calibration Date:
 Main (Module): 02/06/2018
 Remote (Module): 02/06/2018

Test Summary: PASS

Model: DSX-8000
 Main S/N: 1803463
 Remote S/N: 1803429
 Main Adapter: DSX-PLA804
 Remote Adapter: DSX-PLA804

Length (ft), Limit 295	[Pair 12]	10
Prop. Delay (ns), Limit 498	[Pair 36]	17
Delay Skew (ns), Limit 44	[Pair 12]	0
Resistance (ohms)	[Pair 36]	0.80
Insertion Loss Margin (dB)	[Pair 36]	19.9
Frequency (MHz)	[Pair 36]	100.0
Limit (dB)	[Pair 36]	21.0



Worst Case Margin Worst Case Value

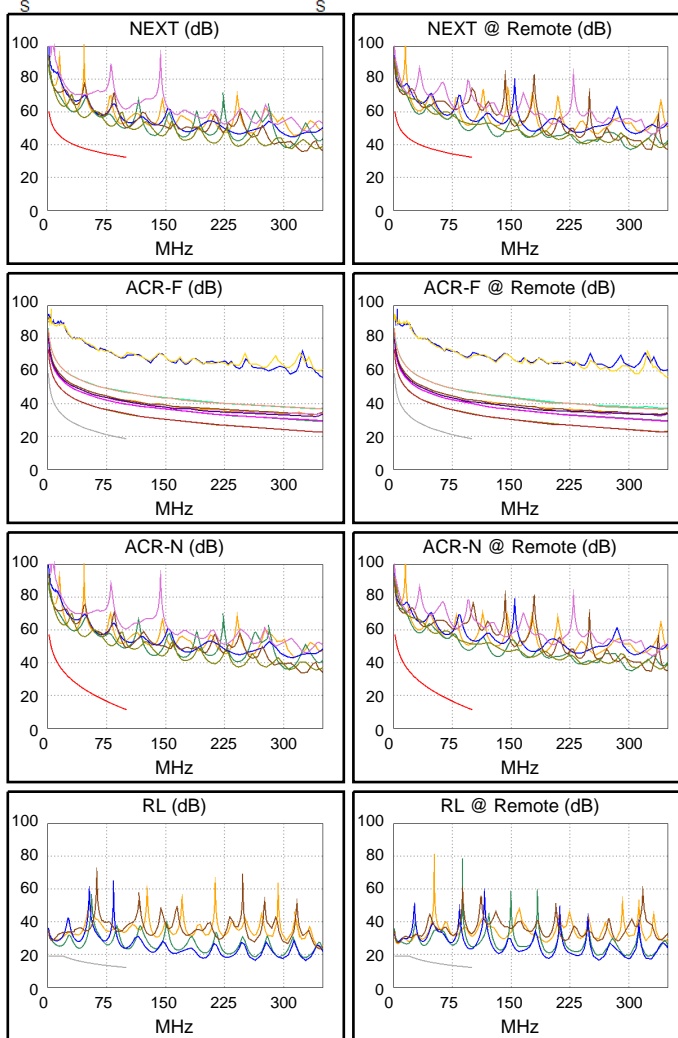
PASS	MAIN	SR	MAIN	SR
Worst Pair	36-78	12-45	12-45	12-45
NEXT (dB)	17.5	16.0	17.7	16.1
Freq. (MHz)	80.5	95.3	98.3	96.0
Limit (dB)	33.9	32.7	32.4	32.6
Worst Pair	45	12	45	12
PS NEXT (dB)	17.8	16.8	17.9	17.0
Freq. (MHz)	99.3	95.3	100.0	96.8
Limit (dB)	29.4	29.7	29.3	29.5

PASS	MAIN	SR	MAIN	SR
Worst Pair	36-45	36-45	36-45	36-45
ACR-F (dB)	14.8	14.8	14.9	14.9
Freq. (MHz)	99.5	99.5	100.0	100.0
Limit (dB)	18.7	18.7	18.6	18.6
Worst Pair	36	45	36	36
PS ACR-F (dB)	16.4	16.4	16.7	16.7
Freq. (MHz)	1.3	1.3	100.0	100.0
Limit (dB)	53.7	53.7	15.6	15.6

N/A	MAIN	SR	MAIN	SR
Worst Pair	12-36	12-45	12-45	12-45
ACR-N (dB)	27.2	25.0	37.3	35.5
Freq. (MHz)	2.5	3.6	98.3	96.0
Limit (dB)	54.8	51.7	11.7	12.1
Worst Pair	12	12	45	12
PS ACR-N (dB)	27.6	25.3	37.8	36.6
Freq. (MHz)	2.4	3.6	100.0	96.8
Limit (dB)	52.3	48.7	8.3	8.9

N/A	MAIN	SR	MAIN	SR
Worst Pair	36	36	36	45
RL (dB)	6.0	7.4	11.4	11.2
Freq. (MHz)	16.9	18.1	100.0	99.3
Limit (dB)	19.0	19.0	12.0	12.0

Compliant Network Standards:
 10BASE-T 100BASE-TX 100BASE-T4
 1000BASE-T 2.5GBASE-T ATM-25
 ATM-51 ATM-155 100VG-AnyLan
 TR-4 TR-16 Active TR-16 Passive





Cable ID: 70192-2

Date / Time: 05/10/2019 02:33:53 PM

Headroom 15.2 dB (NEXT 12-45)

Test Limit: TIA Cat 5e Perm. Link

Cable Type: Cat 5e U/UTP

NVP: 69.0%

Operator: HONESTY

Software Version: V6.1 Build 3

Limits Version: V7.1

Calibration Date:

Main (Module): 02/06/2018

Remote (Module): 02/06/2018

Test Summary: PASS

Model: DSX-8000

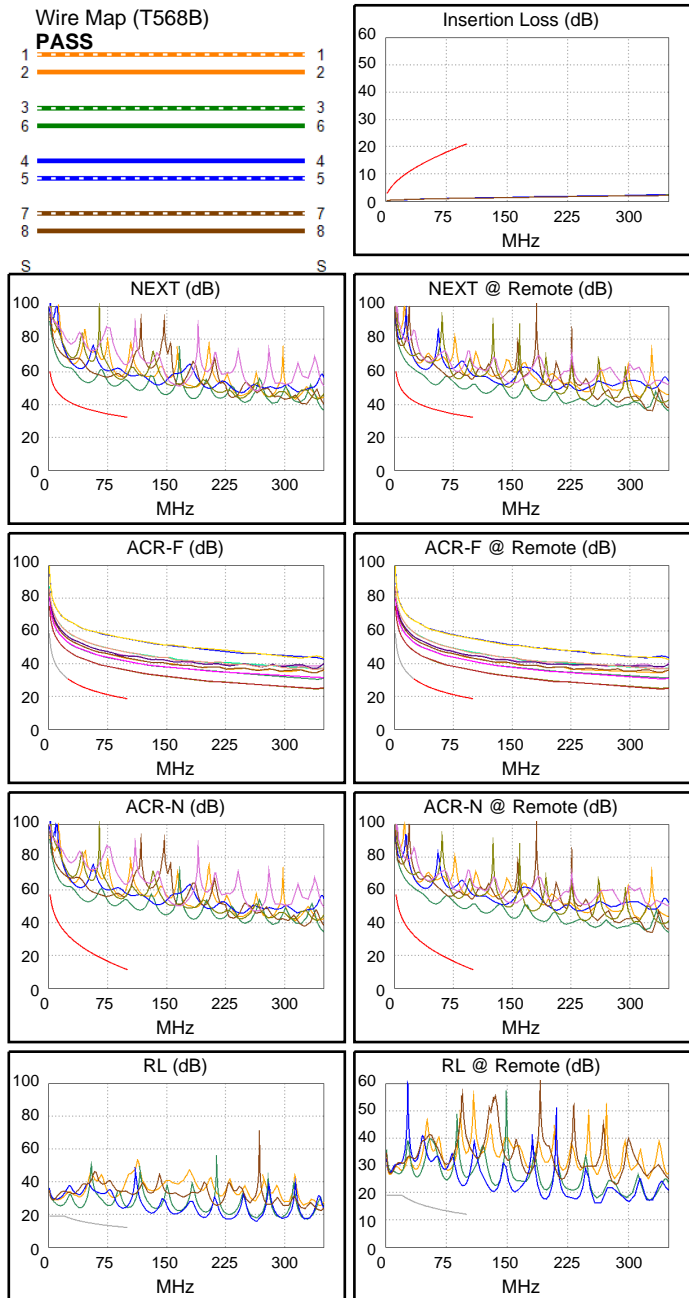
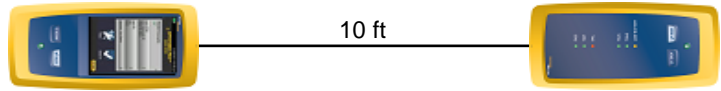
Main S/N: 1803463

Remote S/N: 1803429

Main Adapter: DSX-PLA804

Remote Adapter: DSX-PLA804

Length (ft), Limit 295	[Pair 12]	10
Prop. Delay (ns), Limit 498	[Pair 36]	17
Delay Skew (ns), Limit 44	[Pair 12]	0
Resistance (ohms)	[Pair 36]	0.78
Insertion Loss Margin (dB)	[Pair 36]	19.9
Frequency (MHz)	[Pair 36]	100.0
Limit (dB)	[Pair 36]	21.0



Worst Case Margin Worst Case Value

PASS	MAIN	SR	MAIN	SR
Worst Pair	12-45	12-45	12-45	12-45
NEXT (dB)	16.2	15.2	18.0	16.6
Freq. (MHz)	48.3	51.3	85.3	90.3
Limit (dB)	37.5	37.1	33.4	33.0
Worst Pair	12	45	12	12
PS NEXT (dB)	18.7	17.8	20.0	18.9
Freq. (MHz)	46.3	51.3	85.3	91.3
Limit (dB)	34.8	34.1	30.4	30.0

PASS	MAIN	SR	MAIN	SR
Worst Pair	45-36	36-45	36-45	36-45
ACR-F (dB)	16.6	16.6	16.8	16.8
Freq. (MHz)	98.3	98.3	100.0	100.0
Limit (dB)	18.8	18.8	18.6	18.6
Worst Pair	45	45	45	45
PS ACR-F (dB)	18.1	18.2	18.6	18.5
Freq. (MHz)	1.1	1.3	100.0	100.0
Limit (dB)	54.6	53.7	15.6	15.6

N/A	MAIN	SR	MAIN	SR
Worst Pair	12-45	12-45	12-45	12-45
ACR-N (dB)	26.9	26.3	36.3	35.4
Freq. (MHz)	14.1	3.8	85.3	90.3
Limit (dB)	38.7	51.4	14.2	13.2
Worst Pair	45	45	12	12
PS ACR-N (dB)	29.0	26.9	38.3	37.9
Freq. (MHz)	13.6	3.8	85.3	91.3
Limit (dB)	36.1	48.4	11.2	10.0

N/A	MAIN	SR	MAIN	SR
Worst Pair	36	12	45	45
RL (dB)	6.3	7.6	11.7	10.3
Freq. (MHz)	15.5	6.0	95.5	95.5
Limit (dB)	19.0	19.0	12.2	12.2

Compliant Network Standards:

10BASE-T	100BASE-TX	100BASE-T4
1000BASE-T	2.5GBASE-T	ATM-25
ATM-51	ATM-155	100VG-AnyLan
TR-4	TR-16 Active	TR-16 Passive



Cable ID: 70192-3

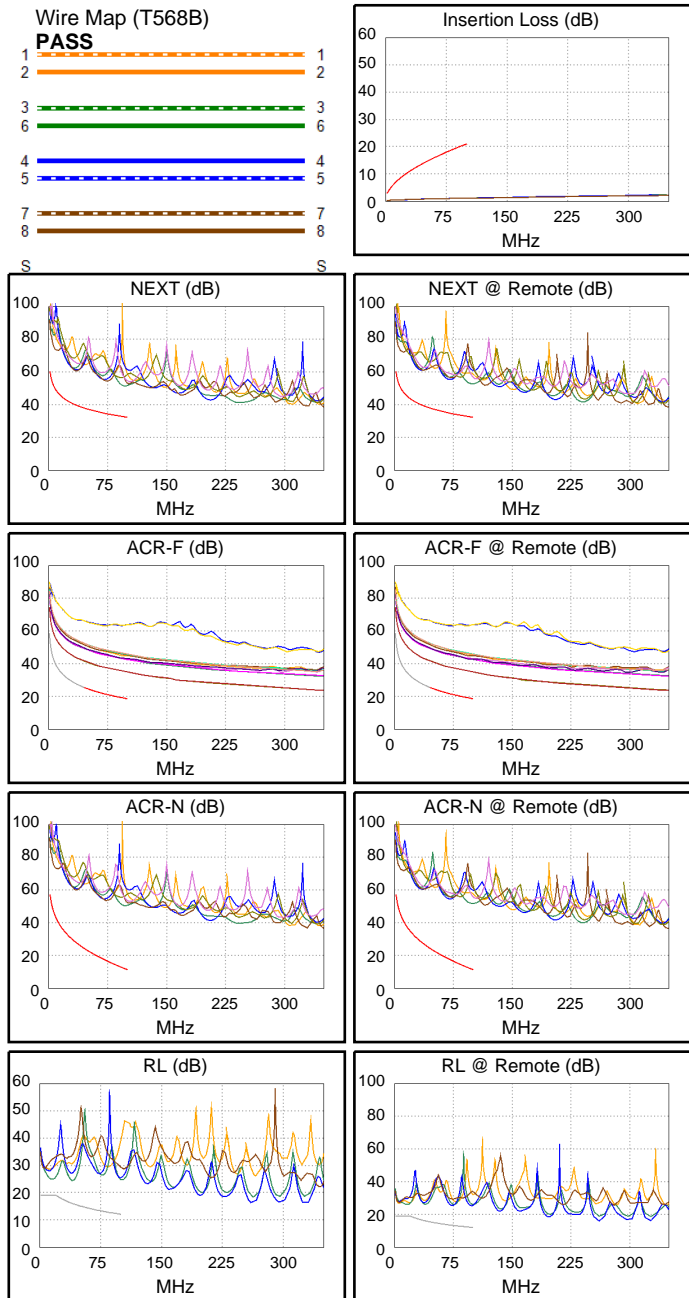
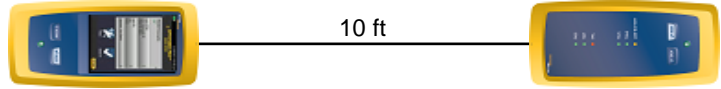
Date / Time: 05/10/2019 02:34:30 PM
Headroom 18.9 dB (NEXT 12-45)
Test Limit: TIA Cat 5e Perm. Link
 Cable Type: Cat 5e U/UTP
 NVP: 69.0%

Operator: HONESTY
 Software Version: V6.1 Build 3
 Limits Version: V7.1
 Calibration Date:
 Main (Module): 02/06/2018
 Remote (Module): 02/06/2018

Test Summary: PASS

Model: DSX-8000
 Main S/N: 1803463
 Remote S/N: 1803429
 Main Adapter: DSX-PLA804
 Remote Adapter: DSX-PLA804

Length (ft), Limit 295	[Pair 12]	10
Prop. Delay (ns), Limit 498	[Pair 36]	17
Delay Skew (ns), Limit 44	[Pair 12]	0
Resistance (ohms)	[Pair 36]	0.80
Insertion Loss Margin (dB)	[Pair 12]	20.0
Frequency (MHz)	[Pair 12]	100.0
Limit (dB)	[Pair 12]	21.0



Worst Case Margin Worst Case Value

PASS	MAIN	SR	MAIN	SR
Worst Pair	12-45	12-45	12-45	12-45
NEXT (dB)	18.9	20.4	19.1	20.5
Freq. (MHz)	96.5	99.3	98.3	99.8
Limit (dB)	32.6	32.4	32.4	32.3
Worst Pair	45	45	45	45
PS NEXT (dB)	19.0	20.6	19.0	21.8
Freq. (MHz)	100.0	34.0	100.0	100.0
Limit (dB)	29.3	37.0	29.3	29.3

PASS	MAIN	SR	MAIN	SR
Worst Pair	36-45	36-45	36-45	36-45
ACR-F (dB)	15.8	15.8	15.9	15.9
Freq. (MHz)	99.5	98.3	100.0	100.0
Limit (dB)	18.7	18.8	18.6	18.6
Worst Pair	45	45	45	36
PS ACR-F (dB)	17.7	17.7	18.0	18.0
Freq. (MHz)	1.1	1.3	100.0	100.0
Limit (dB)	54.6	53.7	15.6	15.6

N/A	MAIN	SR	MAIN	SR
Worst Pair	36-45	36-45	12-45	12-45
ACR-N (dB)	28.3	25.3	38.8	40.4
Freq. (MHz)	5.1	4.1	98.3	99.8
Limit (dB)	48.7	50.6	11.7	11.4
Worst Pair	45	45	45	45
PS ACR-N (dB)	29.9	26.8	39.0	41.8
Freq. (MHz)	3.1	4.1	100.0	100.0
Limit (dB)	50.0	47.6	8.3	8.3

N/A	MAIN	SR	MAIN	SR
Worst Pair	36	36	36	45
RL (dB)	5.8	7.1	8.5	13.2
Freq. (MHz)	15.6	16.0	41.0	99.0
Limit (dB)	19.0	19.0	15.9	12.1

Compliant Network Standards:
 10BASE-T 100BASE-TX 100BASE-T4
 1000BASE-T 2.5GBASE-T ATM-25
 ATM-51 ATM-155 100VG-AnyLan
 TR-4 TR-16 Active TR-16 Passive



Cable ID: 70192-4

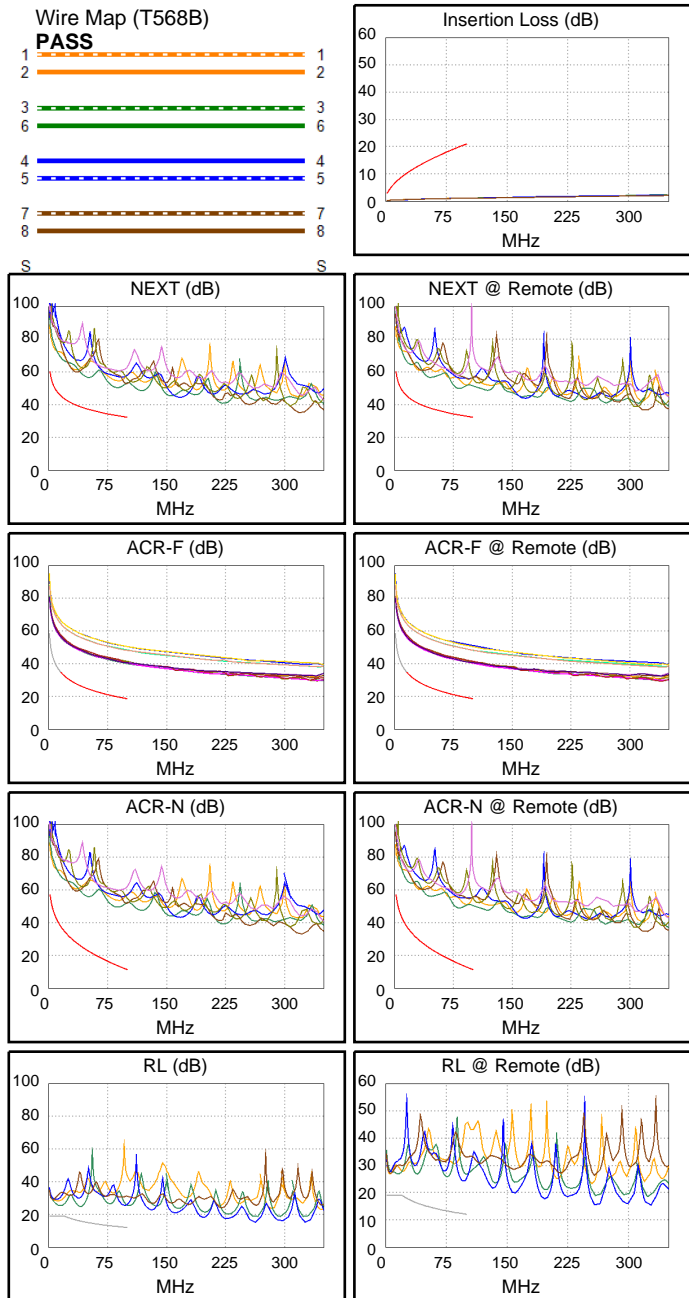
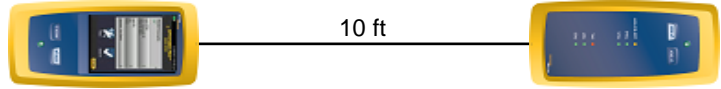
Date / Time: 05/10/2019 02:35:10 PM
Headroom 16.1 dB (NEXT 12-45)
Test Limit: TIA Cat 5e Perm. Link
 Cable Type: Cat 5e U/UTP
 NVP: 69.0%

Operator: HONESTY
 Software Version: V6.1 Build 3
 Limits Version: V7.1
 Calibration Date:
 Main (Module): 02/06/2018
 Remote (Module): 02/06/2018

Test Summary: PASS

Model: DSX-8000
 Main S/N: 1803463
 Remote S/N: 1803429
 Main Adapter: DSX-PLA804
 Remote Adapter: DSX-PLA804

Length (ft), Limit 295	[Pair 12]	10
Prop. Delay (ns), Limit 498	[Pair 36]	17
Delay Skew (ns), Limit 44	[Pair 12]	0
Resistance (ohms)	[Pair 36]	0.80
Insertion Loss Margin (dB)	[Pair 12]	20.0
Frequency (MHz)	[Pair 12]	100.0
Limit (dB)	[Pair 12]	21.0



Worst Case Margin Worst Case Value

PASS	MAIN	SR	MAIN	SR
Worst Pair	12-45	12-45	12-45	12-45
NEXT (dB)	17.1	16.1	17.4	16.3
Freq. (MHz)	86.3	81.5	89.3	83.5
Limit (dB)	33.4	33.8	33.1	33.6
Worst Pair	12	12	12	12
PS NEXT (dB)	18.1	17.4	18.3	17.7
Freq. (MHz)	86.3	83.5	89.8	88.3
Limit (dB)	30.4	30.6	30.1	30.2

PASS	MAIN	SR	MAIN	SR
Worst Pair	12-45	45-12	12-45	12-45
ACR-F (dB)	21.1	21.1	21.5	21.5
Freq. (MHz)	13.9	13.9	100.0	100.0
Limit (dB)	35.8	35.8	18.6	18.6
Worst Pair	36	36	36	36
PS ACR-F (dB)	20.2	20.0	20.4	20.4
Freq. (MHz)	98.3	95.0	100.0	100.0
Limit (dB)	15.8	16.1	15.6	15.6

N/A	MAIN	SR	MAIN	SR
Worst Pair	12-36	12-36	12-45	12-45
ACR-N (dB)	26.6	25.9	36.1	34.4
Freq. (MHz)	4.0	1.9	89.3	83.5
Limit (dB)	50.9	57.0	13.4	14.6
Worst Pair	12	12	12	12
PS ACR-N (dB)	28.3	28.0	37.2	36.4
Freq. (MHz)	4.0	1.9	89.8	88.3
Limit (dB)	47.9	54.0	10.3	10.6

N/A	MAIN	SR	MAIN	SR
Worst Pair	36	12	36	45
RL (dB)	6.3	7.7	8.9	12.0
Freq. (MHz)	15.3	5.1	40.8	96.5
Limit (dB)	19.0	19.0	15.9	12.2

Compliant Network Standards:
 10BASE-T 100BASE-TX 100BASE-T4
 1000BASE-T 2.5GBASE-T ATM-25
 ATM-51 ATM-155 100VG-AnyLan
 TR-4 TR-16 Active TR-16 Passive



Cable ID: 70192-5

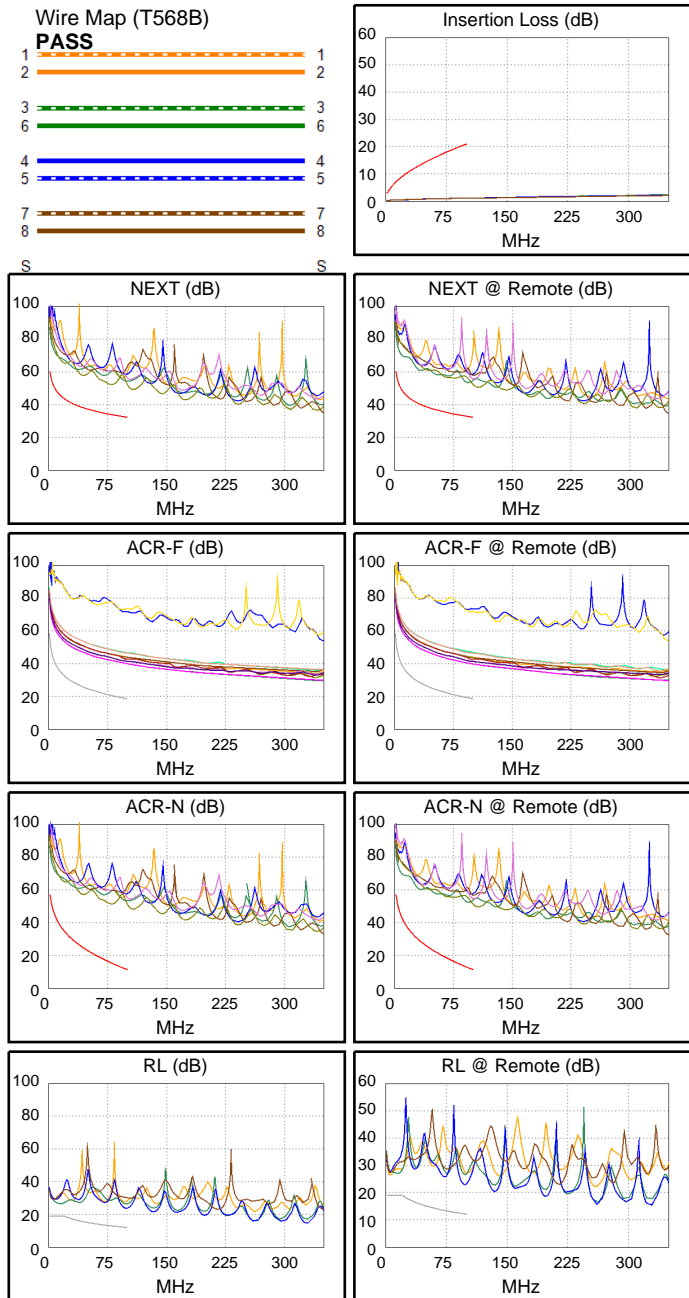
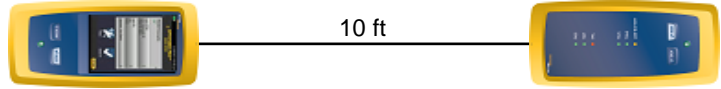
Date / Time: 05/10/2019 02:35:50 PM
Headroom 18.3 dB (NEXT 36-78)
Test Limit: TIA Cat 5e Perm. Link
 Cable Type: Cat 5e U/UTP
 NVP: 69.0%

Operator: HONESTY
 Software Version: V6.1 Build 3
 Limits Version: V7.1
 Calibration Date:
 Main (Module): 02/06/2018
 Remote (Module): 02/06/2018

Test Summary: PASS

Model: DSX-8000
 Main S/N: 1803463
 Remote S/N: 1803429
 Main Adapter: DSX-PLA804
 Remote Adapter: DSX-PLA804

Length (ft), Limit 295	[Pair 12]	10
Prop. Delay (ns), Limit 498	[Pair 36]	17
Delay Skew (ns), Limit 44	[Pair 12]	0
Resistance (ohms)	[Pair 45]	0.81
Insertion Loss Margin (dB)	[Pair 12]	20.0
Frequency (MHz)	[Pair 12]	100.0
Limit (dB)	[Pair 12]	21.0



Worst Case Margin Worst Case Value

PASS	MAIN	SR	MAIN	SR
Worst Pair	36-78	12-45	36-78	36-78
NEXT (dB)	18.3	19.9	18.5	20.1
Freq. (MHz)	79.3	4.4	81.0	100.0
Limit (dB)	34.0	54.2	33.8	32.3
Worst Pair	36	78	78	78
PS NEXT (dB)	20.5	20.9	20.9	20.9
Freq. (MHz)	80.5	100.0	100.0	100.0
Limit (dB)	30.9	29.3	29.3	29.3

PASS	MAIN	SR	MAIN	SR
Worst Pair	12-45	45-12	12-45	45-12
ACR-F (dB)	20.6	20.7	21.2	21.2
Freq. (MHz)	7.1	9.5	100.0	100.0
Limit (dB)	41.6	39.1	18.6	18.6
Worst Pair	45	45	45	45
PS ACR-F (dB)	21.7	21.7	21.9	22.0
Freq. (MHz)	95.0	3.5	100.0	100.0
Limit (dB)	16.1	44.7	15.6	15.6

N/A	MAIN	SR	MAIN	SR
Worst Pair	12-45	12-45	36-78	36-78
ACR-N (dB)	25.5	23.3	40.1	40.1
Freq. (MHz)	3.0	2.1	100.0	100.0
Limit (dB)	53.3	56.1	11.3	11.3
Worst Pair	45	45	78	78
PS ACR-N (dB)	27.8	25.4	40.9	40.9
Freq. (MHz)	3.0	2.1	100.0	100.0
Limit (dB)	50.3	53.1	8.3	8.3

N/A	MAIN	SR	MAIN	SR
Worst Pair	36	12	45	45
RL (dB)	7.5	7.4	11.7	10.8
Freq. (MHz)	15.9	5.9	99.8	98.8
Limit (dB)	19.0	19.0	12.0	12.1

Compliant Network Standards:
 10BASE-T 100BASE-TX 100BASE-T4
 1000BASE-T 2.5GBASE-T ATM-25
 ATM-51 ATM-155 100VG-AnyLan
 TR-4 TR-16 Active TR-16 Passive



Cable ID: 70192-6

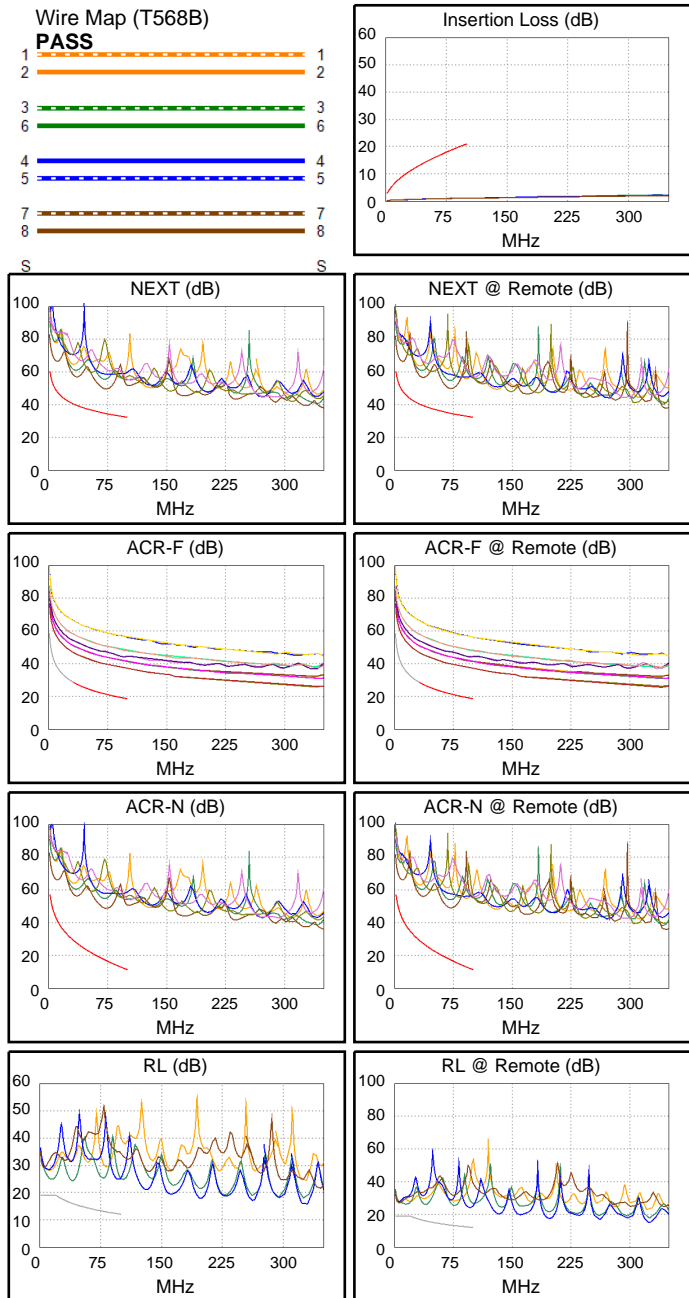
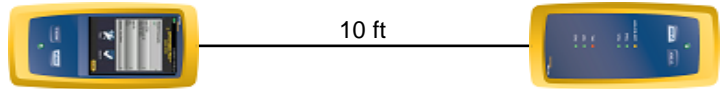
Date / Time: 05/10/2019 02:36:49 PM
Headroom 15.0 dB (NEXT 36-45)
Test Limit: TIA Cat 5e Perm. Link
 Cable Type: Cat 5e U/UTP
 NVP: 69.0%

Operator: HONESTY
 Software Version: V6.1 Build 3
 Limits Version: V7.1
 Calibration Date:
 Main (Module): 02/06/2018
 Remote (Module): 02/06/2018

Test Summary: PASS

Model: DSX-8000
 Main S/N: 1803463
 Remote S/N: 1803429
 Main Adapter: DSX-PLA804
 Remote Adapter: DSX-PLA804

Length (ft), Limit 295	[Pair 12]	10
Prop. Delay (ns), Limit 498	[Pair 36]	17
Delay Skew (ns), Limit 44	[Pair 12]	0
Resistance (ohms)	[Pair 36]	0.80
Insertion Loss Margin (dB)	[Pair 12]	20.0
Frequency (MHz)	[Pair 12]	100.0
Limit (dB)	[Pair 12]	21.0



Worst Case Margin Worst Case Value

PASS	MAIN	SR	MAIN	SR
Worst Pair	36-45	36-45	36-45	36-45
NEXT (dB)	15.0	15.2	15.1	15.3
Freq. (MHz)	72.5	71.8	73.5	72.5
Limit (dB)	34.6	34.7	34.5	34.6
Worst Pair	45	45	45	45
PS NEXT (dB)	16.8	17.0	16.9	17.1
Freq. (MHz)	72.5	71.8	73.3	72.5
Limit (dB)	31.6	31.7	31.5	31.6

PASS	MAIN	SR	MAIN	SR
Worst Pair	36-45	36-45	36-45	45-36
ACR-F (dB)	17.9	17.9	18.0	18.0
Freq. (MHz)	99.5	97.3	100.0	100.0
Limit (dB)	18.7	18.9	18.6	18.6
Worst Pair	36	36	36	36
PS ACR-F (dB)	19.1	19.0	19.4	19.3
Freq. (MHz)	96.0	96.0	100.0	100.0
Limit (dB)	16.0	16.0	15.6	15.6

N/A	MAIN	SR	MAIN	SR
Worst Pair	36-45	36-45	36-45	36-45
ACR-N (dB)	20.6	19.3	32.0	32.1
Freq. (MHz)	2.5	2.1	73.5	72.5
Limit (dB)	54.8	56.1	16.8	17.0
Worst Pair	36	45	45	45
PS ACR-N (dB)	23.2	21.8	33.8	33.9
Freq. (MHz)	2.6	2.4	73.3	72.5
Limit (dB)	51.4	52.3	13.8	14.0

N/A	MAIN	SR	MAIN	SR
Worst Pair	36	36	36	45
RL (dB)	5.8	7.3	8.4	12.0
Freq. (MHz)	15.6	15.5	40.8	96.3
Limit (dB)	19.0	19.0	15.9	12.2

Compliant Network Standards:
 10BASE-T 100BASE-TX 100BASE-T4
 1000BASE-T 2.5GBASE-T ATM-25
 ATM-51 ATM-155 100VG-AnyLan
 TR-4 TR-16 Active TR-16 Passive