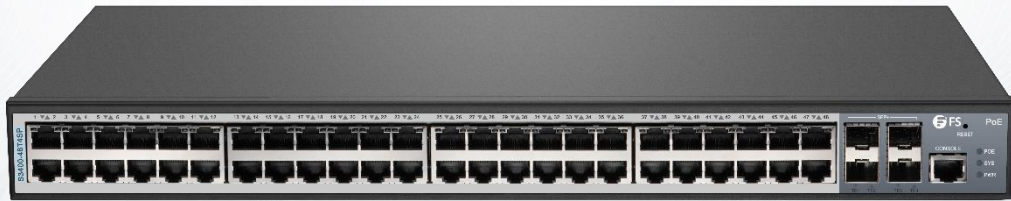


S3400-48T4SP PoE+ Switch

COST EFFECTIVE & EFFICIENT POE SOLUTION FOR BUSINESS



Overview

S3400-48T4SP Gigabit Ethernet PoE+ switch is a new-generation intelligent access switch designed for enterprise networks, can be used as Ethernet Power Sourcing Equipment (PSE). It can automatically identify the connected devices whether compatible with IEEE 802.3af or IEEE 802.3at standards and supply power for them.

The Gigabit PoE+ switch makes it easier to deploy wireless access point (AP) and IP-based terminal network equipment with PoE technology.

Benefits

- Carrier-Level Ethernet Access Switch
- Comprehensive IPv6 Solutions
- Varied QoS Policies
- Complete Security Mechanism
- Easy Management and Maintenance

Product Characteristics

Carrier-Level Ethernet Access Switch

Support the carrier-level Ethernet- ring protection protocol with less than 50ms recovery time, STP/RSTP/MSTP, backup uplink ports, and LACP link aggregation to cater to the requirements of high reliability of carriers;

Powerful ACL functions to access and control L2-L7 data based on physical port, providing carriers flexible and various policy control methods;

Support In-Service Software Upgrade (ISSU) to ensure the unremitting data forwarding during system upgrade;

Support various L2 multicast functions such as IGMP-snooping, fast-leave and MVR to fully meet the operation requirements of carrier's IPTV.

Comprehensive IPv6 Solutions

Support the IPv6 protocol suite, IPv6 neighbor discovery, ICMPv6 and Path MTU discovery;

Support Ping, Traceroute, Telnet, SSH and ACL on the basis of IPv6, meeting IPv6 networks' equipment management requirements and service control requirements.

Varied QoS Policies

Support priority retagging and complicated flow classification based on VLAN, MAC, source address, destination address, IP or priority, better streamlining carrier's services;

Provide flexible bandwidth control policies, supporting port-/flow-based flow limit, ensuring the line speed forwarding of each port.

Support multiple queue schedule algorithms such as SP, WRR and "SP + WRR".

Complete Security Mechanism

Equipment-level security: The advanced hardware infrastructure design realizes the level-based packet schedule and packet protection, prevents DoS-/TCP- related SYN Flood, UDP Flood, Broadcast Storm or large traffic attacks, and supports level-based command line protection, endowing different levels of users with different management permissions;

Perfect security authentication mechanisms: IEEE 802.1x, Radius and Tacacs+;

Support storm/multicast/unicast limit, ensuring the normal running of equipment in harsh network conditions;

Support perfect ring detection mechanism, ensuring the long-term stable running of network;

Support port isolation within the same VLAN, DHCP-Snooping, and IP + MAC + Port binding.

Easy Management and Maintenance

Support many management modes such as the CLI, Telnet, SSH, SSL and SNMP;

Support the WEB management mode, which is easy and efficient for installing and debugging the device;

Support ISSU (In-Service Software Upgrade);

Support SNMP and BDCOM NMS smart network management platform. The combination realizes automatic equipment discovery, network topology management, equipment configuration management, performance data statistics and analysis and trouble management;

Support Zero Touch Provisioning(ZTP) function to minimize manual operator intervention and helps reduce customers' initial deployment costs.

Technical Specification

S3400-48T4SP PoE+ switch comes with the industry-standard hardware and FSOS. Here's a look at the details.

CHARACTERISTICS

S3400-48T4SP

Ports

Ports 48x 10/100/1000Base-T RJ45,
4x 10G SFP+

Max. 1G Ports 52

Max. 10G Ports 4

Console Port 1

Operating System

OS FSOS

Key Component

Switch Chip VSC7448

CPU MIPS

Performance

Layer Type Layer 2+

Switching Capacity 176 Gbps

Forwarding Rate 132 Mpps

Jumbo Frame 9KB

MAC Address 32K

Number of VLANs 4K

MTBF (Hours) >50000

Flash Memory 16MB

Authentication Methods 802.1X, AAA

Remote Management Protocol SNMP, RMON, HTTP, Telnet, SSH

Technical Specification

S3400-48T4SP PoE+ switch comes with the industry-standard hardware and FSOS. Here's a look at the details.

CHARACTERISTICS

	S3400-48T4SP
Auto-Negotiation	YES
Auto-MDI/MDIX	YES
DRAM	256MB
Buffer Size	4MB
Total SVI	10
Switch Method	Storage and forward
Acoustic Noise	51.8dB
Airflow Direction	Left-to-Right
Power	
Input Voltage (AC)	100-240V, 50-60Hz, 6.5A
Output (AC)	53.5V, 7.5A
Input Voltage (DC)	36-72V, 1.7A
Output (DC)	48V (802.3af)/50V (802.3at), 4A
Max. Power Consumption	400W
Power Budget	370W
Physical and Environmental	
Fan Number	4
Dimensions (HxWxD)	1.75" x 17.37" x 11.04" (44.4 x 441.2 x 208.4mm)
Rack Space	1U
Unit Weight	9.48 lbs (4.3kg)
Operating Temperature	14°F to 122°F (-10°C to 50°C)
Storage Temperature	-40°F to 158°F (-40°C to 70°C)
Operating Humidity	10% to 90% (Non-condensing)

Physical and Environmental

Max. Power Supply Distance	100M
-----------------------------------	------

Warranty

Hardware Warranty	4 Years
--------------------------	---------

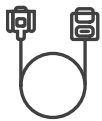
KEY FEATURES

Function	Description
MAC Exchange	<ul style="list-style-type: none"> • Static configuration and dynamic MAC learning; • MAC browsing and removal; • configurable aging time of the MAC address; • limited number of learnable MAC addresses; • MAC filtration; • IEEE 802.1AE MacSec Security Control
VLAN	<ul style="list-style-type: none"> • 4K VLAN; • GVRP; • QinQ; • Private VLAN; • Voice VLAN
STP	<ul style="list-style-type: none"> • 802.1D (STP), 802.1W (RSTP) and 802.1S (MSTP); • BPDU protection, root protection, and loopback protection; • EAPS and ERPS
Multicast	<ul style="list-style-type: none"> • IGMP v1/v2/v3; • IGMP Snooping; • IGMP Fast Leave; • Multicast/unicast limit; • Multicast VLAN Registration

KEY FEATURES

Function	Description
IP Routing	<ul style="list-style-type: none"> static route, RIP v1/v2, OSPFv2
DHCP	<ul style="list-style-type: none"> DHCP Server; DHCP Relay; DHCP Client; DHCP Snooping

Accessories



Console Cable *1



Power Cord *1



M3 Bracket Screw *8



Rack Mount Bracket *2



User Manual *1



Rubber Pad *4



 <https://www.fs.com>



The information in this document is subject to change without notice. FS has made all efforts to ensure the accuracy of the information, but all information in this document does not constitute any kind of warranty.