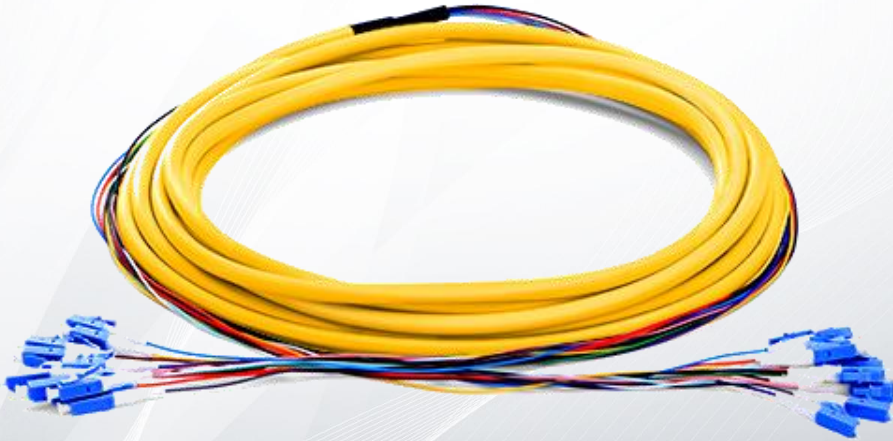


# Indoor Multifiber Cables Datasheet

BEST USED TO REDUCE CABLE CLUTTER IN NETWORKING ENVIRONMENTS



## Indoor Pre-terminated Multifiber Cables

The indoor pre-terminated multifiber cables, refer to the 4, 6, 8, 12 and 24 fibers. We also provide a full set of customized services, such as length, connector, fiber grade, specification, cable jacket and pulling eye etc.

Highly configurable multi-fiber pre-terminated cable assemblies are engineering for maximum performance and crafted ensuring superior quality.

## Standards Compliance

- RoHS, CE, REACH, ISO9001 and WEEE Compliant
- Complies with EIA/TIA 604-2

## Features

- High quality zirconia ferrules.
- Good repeatability and interchangeability.
- OS2/OM4/OM3/OM2/OM1 are available.
- 4/6/8/12/24 fibers are available.
- LC/SC/ST/FC/LSH connectors are available.
- Apply to indoor networking.
- Factory terminated and tested for insertion loss, return loss and end face.

## Technical Specification

Physical Characteristics	Description
Fiber Count	4/6/8/12/24 Fibers
Fiber Mode	OS2/OM4/OM3/OM2/OM1
Fiber Grade	OS2: G.657.A1; OM4/OM3/OM2: Bend Insensitive; OM1: G.651
Connector A	LC/SC/ST/FC/LSH
Connector B	LC/SC/ST/FC/LSH
Polish Type	SMF: UPC/APC; MMF: UPC
Breakout Diameter	Duplex: 2.0mm Simplex: 0.9/2.0mm
Cable Jacket	PVC (Riser/OFNR)/LSZH/Plenum (OFNP)
Jacket Color	OS2: Yellow; OM4/OM3: Aqua; OM2/OM1: Orange
Minimum Bend Radius (mm)	20/10D (Dynamic/Static)

**Note:** When the total cable length is less than 3m, the breakout length is 0.3m instead of 0.5m.

Trunk Diameter (mm)	4 Fibers	6 Fibers	8 Fibers	12 Fibers	24 Fibers
<b>2.0mm Breakout Leg</b>	7.0-8.0mm	8.5-9.5mm	10.0-11.0mm	12.0-13.0mm	15.0-16.0mm
<b>0.9mm Breakout Leg</b>	4.6-5.0mm	5.0-5.4mm	6.0-6.4mm	6.5-7.1mm	7.9-8.9mm

Optical Characteristics	Description
Insertion Loss (dB)	≤0.3
Return Loss (dB)	SMF: UPC≥50, APC≥60 (LC/SC/ST/FC) UPC≥55, APC≥75 (LSH) MMF: UPC≥30 (LC/SC/ST/FC/LSH)
Wavelength (nm)	SMF: 1310/1550; MMF: 850/1300
Attenuation (dB/km)	SMF: ≤0.36 at 1310nm, ≤0.22 at 1550nm MMF: ≤3.0 at 850nm, ≤1.0 at 1300nm
Operating Temperature	-40°C to 75°C
Storage Temperature	-45°C to 85°C

## Hot Products

ID	Description
#21543	Customized OS2 Single Mode Indoor Tight-Buffered Multi-Fiber Breakout Cable
#39047	Customized OM4 Multimode Indoor Tight-Buffered Multi-Fiber Breakout Cable
#39041	Customized OM3 Multimode Indoor Tight-Buffered Multi-Fiber Breakout Cable
#21530	Customized OM1/OM2 Multimode Indoor Tight-Buffered Multi-Fiber Breakout Cable

## Matching Products

ID	Description
#11555	FS for Cisco SFP-10G-LR Compatible, 10GBASE-LR SFP+ 1310nm 10km DOM Transceiver Module (Standard)
#48497	LC/UPC Duplex Single Mode SC Footprint Plastic Fiber Optic Adapter without Flange
#68521	SC/UPC Duplex OM4 Multimode Plastic Fiber Optic Adapter with Flange
#35488	12x LC Duplex, 24 Fibers OS2 Single Mode FHD Fiber Adapter Panel
#35484	6x SC Duplex, 12 Fibers OS2 Single Mode FHD Fiber Adapter Panel
#96427	1U Rack Mount FHD High Density Fiber Enclosure Unloaded, Tool-less Removable Top Cover, Holds up to 4x FHD Cassettes or Panels
#72911	1U Metal Horizontal Lacer Panel with 5 Rotating and Detachable Plastic D-rings

**Note:** The matching products for indoor pre-terminated multifiber cables are shown for reference.



 <https://www.fs.com>



The information in this document is subject to change without notice. FS has made all efforts to ensure the accuracy of the information, but all information in this document does not constitute any kind of warranty.