

FMX Managed Chassis Unloaded

Supports up to 2x 100G Transponder/Muxponder Modules



Description

FMX managed chassis provides a managed, flexible and scalable architecture for fiber networks. It can support up to 2x transponder/muxponder modules to construct a 100G high capacity optical transport networks over a single wavelength.

The chassis, available with an Optical Supervisory Channel (OSC), Electric Supervisory Channel (ESC), supports the hybrid networking of OSC and ESC. It's a platform of low-power consumption that combines state-of-art electronics and superior optical performance which makes it possible to build or upgrade networks to meet the demands of today as well as future multi-services access requirements..

Features

- Independent service card and main control card
- Embedded OSC and ESC for remote management
- Support SNMP v2c and Web browser over HTTP/HTTPS management
- Support up to 2x hot-swappable transponder/muxponder modules
- Individually controlled dual AC or DC pluggable power supply and fan unit
- Support four functions of performance, fault, configuration and security management

Technical Specifications

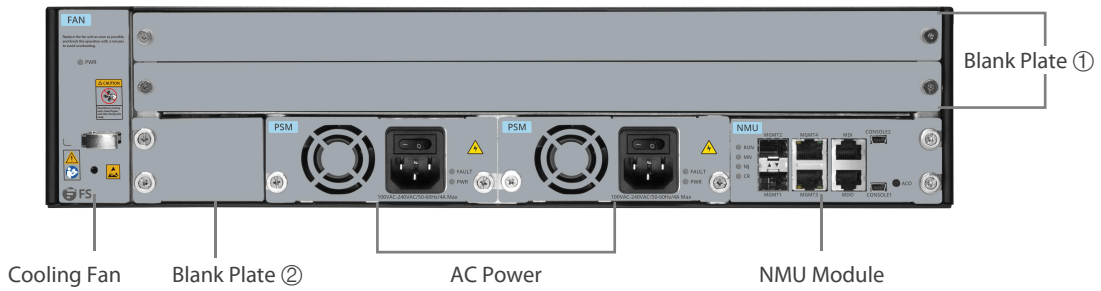
| Physical Specification | Description |
|------------------------------|---|
| Slot Count | 2-slot for 100G transponder/muxponder module |
| Enclosure Type | Rack mountable |
| Power Redundancy | 1+1 backup AC power supply |
| Heat Dissipation | 1x fan module, hot swappable |
| Power Supply* | AC: Input 100 to 240V, 47 to 63Hz; DC: Input -40 to -72V |
| Power Consumption | Max. 350W |
| Operating Temperature | 0° C ~ +45° C |
| Storage Temperature | -40° C ~ +70° C |
| Relative Humidity | 10% to 90%, no condensing |
| Dimensions (HxWxD) | 3.70"x17.48"x9.53" (94x444x242mm) |
| Ingress Protection | Non-waterproof |

| Network Management | Description |
|--------------------------------|--|
| Management Interface | 2x Console Ports 2x SFP LAN Ports 100Base-X 2x RJ45 LAN Ports 10/100Base-T |
| Management Protocols | SNMP v2c, Web browser over HTTP/HTTPS |
| Transmission Protection | SNC |
| In-band DCN Management | GCC0 on OTU4 GCC0 on OTU3 GCC1 or GCC2 or GCC1+2 on ODU4 GCC1 or GCC2 or GCC1+2 on ODU3 |
| Management Channel | Optical Supervisory Channel (OSC) |

* Note: 1. DC: Input -40 to -72V, "-" means negative power supply;

2. FMX managed chassis is with dual AC power supply in default, DC power can be customized, please contact sales@fs.com for more details.

Front Panel



Blank Plate 1

Used for two 1-slot type FMX modules (integrated 100G muxponder/transponder) for building high capacity optical transport networks.

NMU Module

NMU (Network Management Unit) module provides a strong ability in data processing, supporting the function module rapid configuration and intelligent management.

AC Power Supply & Blank Plate 2

Hot-swappable 1+1 redundant AC power and optional DC power, providing stable power supply for the equipment.

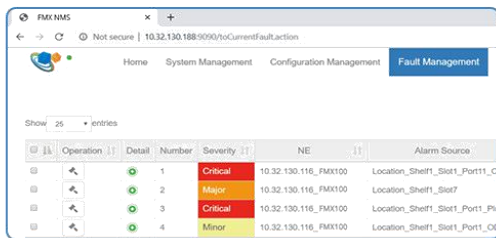
Cooling Fan

Intelligent temperature control system and optimized design of ventilation, ensuring high stability and reliability.

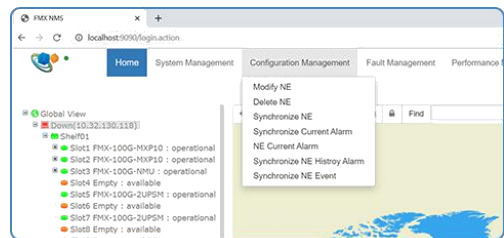
Network Management System

The chassis provides full fault, configuration, performance, security functionality via a user-friendly FMX NMS system-based B/S architecture. And the graphical user interface makes a perfect function and flexible operation.

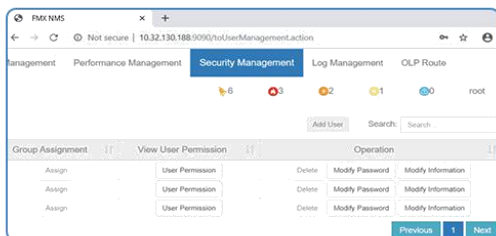
Fault Management



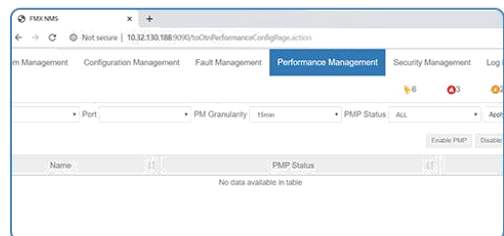
Configuration Management



Security Management



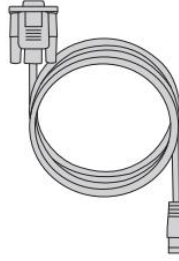
Performance Management



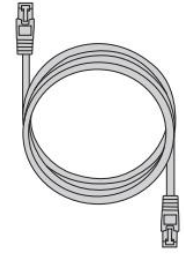
Accessories



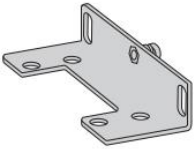
Power Cord x2



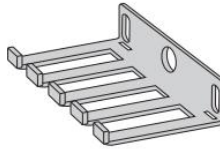
Console Cable x1



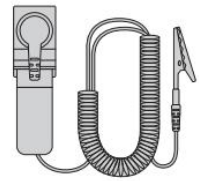
Ethernet Cable x1



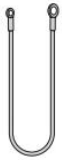
Mounting Bracket x2



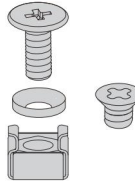
Cable Manager x1



ESD Wrist Strap x1



Grounding Cable x1



M6 Screw Set x4/M4
Screw x8



CD x1

Ordering Information

| ID | Description |
|------------------------|--|
| #96375 | 1x 100G QSFP28 or 2x 40G QSFP+ to 1x 100G CFP Transponder/Muxponder with 100G Coherent CFP Transceiver |
| #96372 | 1x 100G QSFP28 or 2x 40G QSFP+ to 1x 100G CFP Transponder/Muxponder |
| #96376 | 10x 10G SFP+ to 100G CFP 100G Multirate Muxponder with 100G Coherent CFP Transceiver |
| #96373 | 10x 10G SFP+ to 100G CFP 100G Multirate Muxponder |
| #96454 | FMX Managed Chassis Unloaded, Supports up to 2x 100G Transponder/Muxponder |

Note: Standard products are listed above. Customized specifications are available upon request.



 <https://www.fs.com>



The information in this document is subject to change without notice. FS has made all efforts to ensure the accuracy of the information, but all information in this document does not constitute any kind of warranty.