

FHZ 1U Premium Ultra Fiber Enclosure

Allow for easy installation of pre-terminated solutions, and are ideal for ultra high-density fiber applications in data centers, equipment rooms, and central offices.



FHZ 1U Premium Ultra Fiber Enclosure

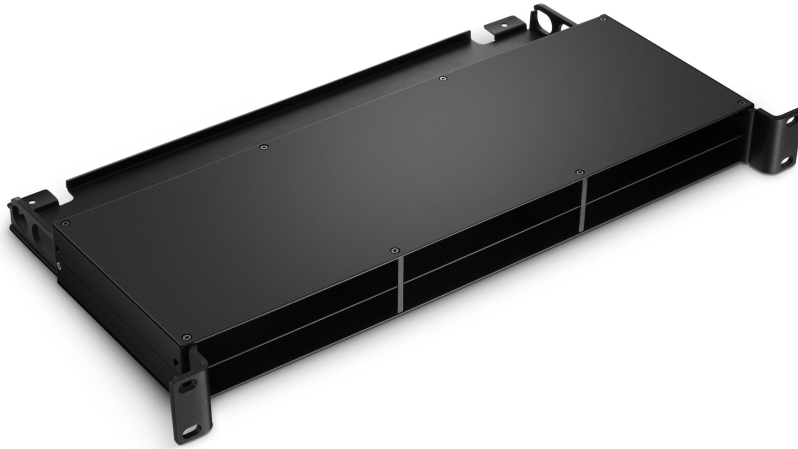
FHZ Premium Ultra Fiber Enclosures are ultra high density preterminated optical cabling solutions with optimized design for fiber applications. The enclosure offers industry-leading connector density, is able to manage up to 216 fibers in 1U space.

Standards Compliance

- TIA/EIA-568-C.3

Features

- Up to 216 LC fibers in 1U space.
- Mounts to standard EIA 19" rack rails, holds up to 6 FHZ MTP® cassettes.
- SPCC rugged heavy-duty steel to enhance the service life.
- Rear cable management tray makes cable attachment easy and secure.
- Side and rear entries for backbone trunk cabling.
- Enables one-person installation of the housing in the rack.
- Stylish, innovative design for advanced networks and active equipment.



Product Specifications

No. of Rack Spaces	1U
Capacity	6 Ports
Fiber Count	Max. 216 Fibers
Enclosure Type	Rack-mountable
Material	SPCC (Black Coating)
Dimensions (HxWxD)	1.75"x19"x10.20" (44.45x483x259mm)
Installation	Standard EIA 19" Rack Rails

Environmental Characteristics

Operating Temperature	-25°C to 50°C
Storage Temperature	-40°C to 65 °C
Installation temperature	0°C to 50°C

Fiber Enclosure Loading List

Description	Max. Capacity	Fiber Count	#ID
36 Fibers OM4 Multimode, MTP®-12 Cassette	6	216 F	#74184
36 Fibers OS2 Single Mode, MTP®-12 Cassette	6	216 F	#74185

Product Application



①



②



③



④

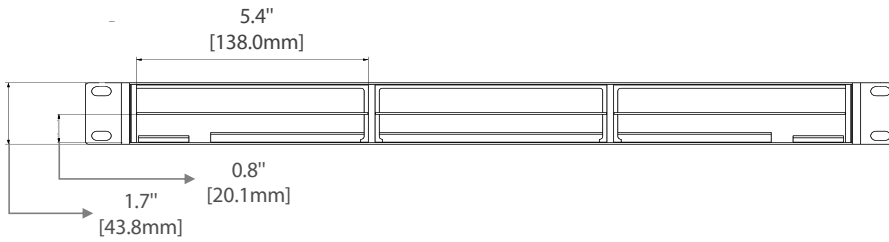


⑤

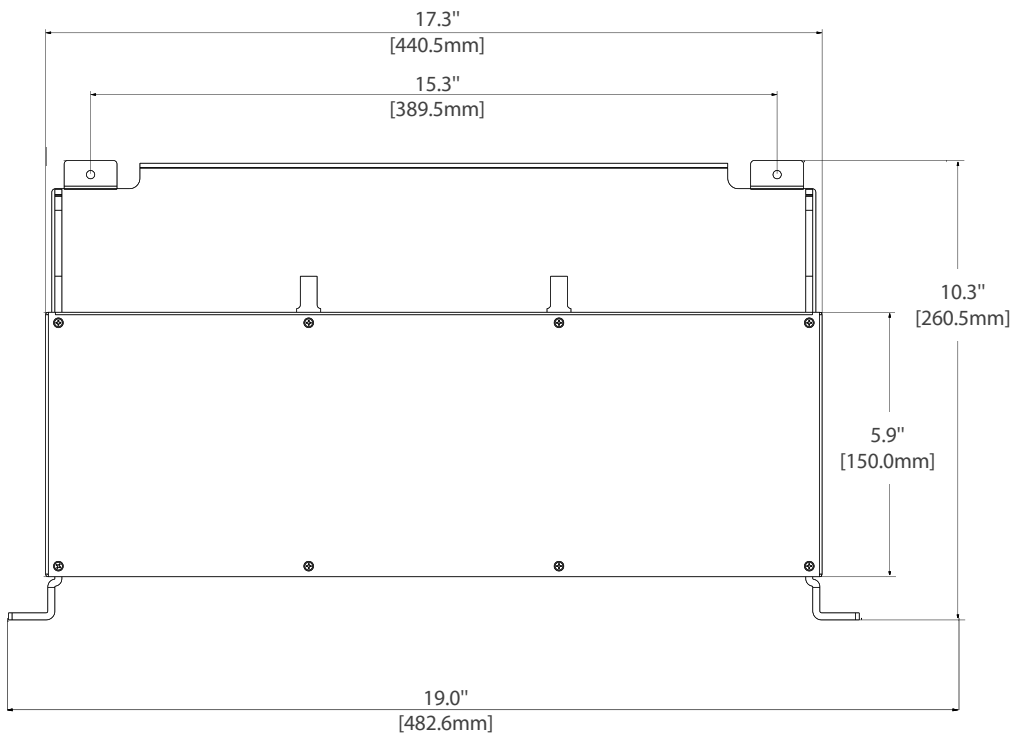
Item No.	#ID	Description
1	#72170	1m (3ft) LC UPC Uniboot Duplex Flat Clip 2.0mm PVC (OFNR) OM4 Fiber Patch Cable
2	#74184	3x MTP®-12 to LC, 36 Fibers OM4 Multimode FHZ MTP®/MPO Cassette
3	#68023	5m (16ft) MTP® Female 12 Fibers OM4 (OM3) 50/125 Multimode Trunk Cable, Type B
4	#74184	3x MTP®-12 to LC, 36 Fibers OM4 Multimode FHZ MTP®/MPO Cassette
5	#74183	1U Rack Mount Premium Ultra HD Fiber Enclosure Unload

Product Specifications

Front View



Top View



Dimensions are in inches. (Dimensions in parentheses are in millimeters).



 <https://www.fs.com>



The information in this document is subject to change without notice. FS has made all efforts to ensure the accuracy of the information, but all information in this document does not constitute any kind of warranty.