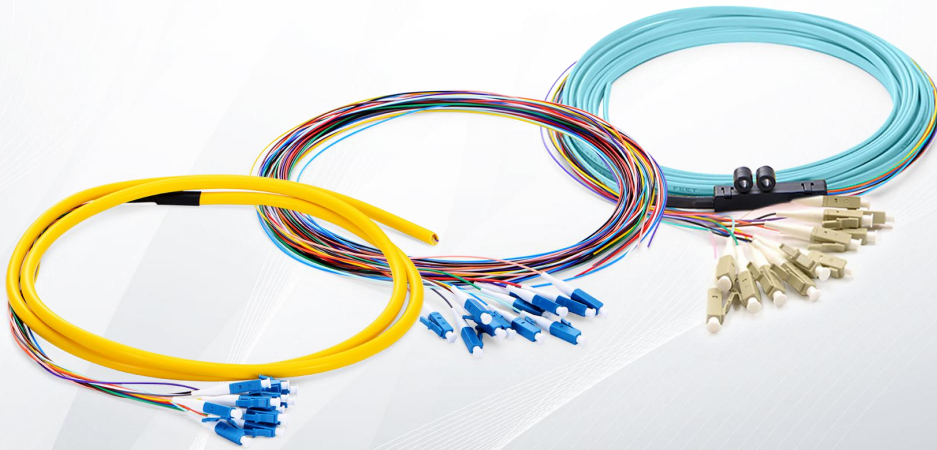


Customized Fiber Pigtails Datasheet

IDEAL FOR CATV, FTTH/FTTX, TELECOMMUNICATION NETWORKS, DATA PROCESSING NETWORKS, LAN/WAN NETWORKS.



Customized fiber pigtails

Fiber optic pigtails are tight buffered fiber cables with connectors pre-terminated on one end and exposed fibers on the other. Simplex or multifiber optic pigtails are available. We also provide a full set of customized services, such as fiber counts, length, connector, fiber grade, cable types and cable diameter etc. Fiber optic pigtails provide a fast way to make communication devices in the field.

Standards Compliance

- ISO9001 and RoHS Compliant

Features

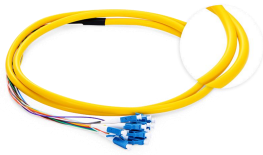
- Tight buffer for easy fusion or mechanical splicing.
- OS2/OM4/OM3/OM2/OM1 are available.
- LC/SC/ST/FC/LSH connectors are provided.
- UPC and APC polish type.
- Bunch/Color-coded/Ribbon cable types are for your choice.
- PVC jacket as default, OFNP and LSZH optional.
- Tested for insertion loss, return loss and end face.

Technical Specification

Physical Characteristics		Simplex		Multifiber		
Fiber Count	Simplex		4/6/8/12/24/48			
Cable Type	Bunch	Bunch	Ribbon	Color-coded		
Fiber Mode	OS2/OM4/OM3/OM2/OM1					
Fiber Grade	OS2: G.652.D/G.657.A1; OM4/OM3/OM2: Bend Insensitive; OM1: G.651					
Connector Type	LC/SC/ST/FC/LSH					
Polish Type	SMF: UPC/APC; MMF: UPC					
Breakout Leg (mm)	2.0/0.9	2.0/0.9	2.0/0.9	0.9		
Cable Jacket	PVC (Riser/OFNR)/LSZH/Plenum (OFNP)				/	
Minimum Bend Radius (mm)	OS2: 30/10; OM4/OM3/OM2: 7.5; OM1: 15	20/10D (Dynamic/Static)	20/10D (Dynamic/Static)	OS2: 30/10; OM4/OM3/OM2: 7.5; OM1: 15		
Trunk Diameter (mm)	4 Fibers	6 Fibers	8 Fibers	12 Fibers	24 Fibers	48 Fibers
2.0mm Breakout Leg	7.0-8.0mm	8.5-9.5mm	10.0-11.0mm	12.0-13.0mm	15.0-16.0mm	16.5-17.5mm
0.9mm Breakout Leg	4.6-5.0mm	5.0-5.4mm	6.0-6.4mm	6.5-7.1mm	7.9-8.9mm	19.5-20.5mm
Optical Characteristics		Description				
Insertion Loss (dB)	≤0.3					
Return Loss (dB)	SMF: UPC≥50, APC≥60 (LC/SC/ST/FC) UPC≥55, APC≥75 (LSH) MMF: UPC≥30 (LC/SC/ST/FC/LSH)					
Wavelength (nm)	SMF: 1310/1550; MMF: 850/1300					
Attenuation (dB/km)	SMF: ≤0.36 at 1310nm, ≤0.22 at 1550nm MMF: ≤3.0 at 850nm, ≤1.0 at 1300nm					
Operating Temperature	-40°C to 75°C					
Storage Temperature	-45°C to 85°C					

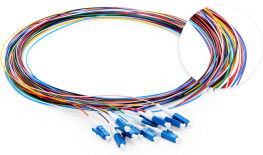
Cable Types Notes

Bunch/Color-coded/Ribbon cable types are available, you can choose to suit the need of different application.



Bunch

Precision alignment of fiber optical components, used in fiber distribution panels and interconnect modules.



Color-coded

Faster connector identification with color-coded pigtail, avoiding incorrect patching by possible fiber flipping.



Ribbon

Compact size, light weight and high efficiency, reducing the cost of field fusion splicing.

Hot Products

ID	Description
#14152	Customized LC/SC/FC/ST/LSH Simplex OS2 Single Mode Fiber Optic Pigtail
#14262	Customized LC/SC/FC/ST/LSH Simplex OS2 Single Mode Armored 3.0mm Fiber Optic Pigtail
#61899	Customized LC/SC/FC/ST/LSH Simplex OM4 Multimode Fiber Optic Pigtail
#21260	Customized LC/SC/FC/ST/LSH 4-48 Fibers OS2 Single Mode Fiber Optic Pigtail
#21239	Customized LC/SC/FC/ST/LSH 4-24 Fibers OM3 Multimode Fiber Optic Pigtail
#21236	Customized LC/SC/FC/ST/LSH 4-24 Fibers OM4 Multimode Fiber Optic Pigtail



 <https://www.fs.com>



The information in this document is subject to change without notice. FS has made all efforts to ensure the accuracy of the information, but all information in this document does not constitute any kind of warranty.