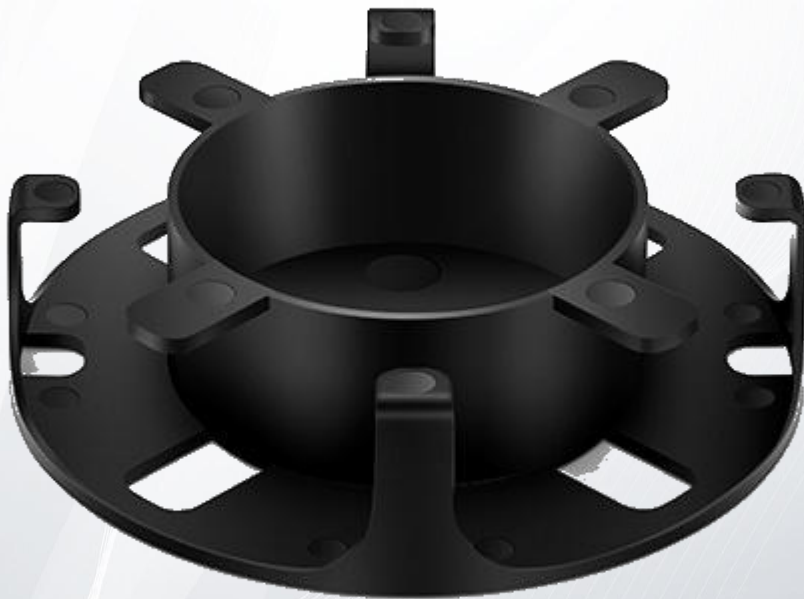


Enclosure Accessories Portfolio

PHYSICAL INFRASTRUCTURE SOLUTIONS



FHD fiber optic enclosures can work in tandem with various dedicated accessories.

The fiber slack management spool should effectively manage excess fiber cable slack, blanking adapter panel should cover empty spaces to prevent from dust, splice tray shall house and protect fiber optic splices, splice tray holder should fit with wall mount enclosure, and provides a location to hold and secure fusion splice trays.

Blanking Adapter Plate

Offer users the ability to add terminations incrementally. Snapping quickly into the patch panels and enclosures for easy network deployment or moves, adds, and changes.



- Cover empty spaces to prevent from dust.
- Prevent hot air to penetrate back into the cold aisle.
- Easy network deployment or moves, adds, and changes.
- Offer users the ability to add terminations incrementally.

Product Description

ID	#35526
Part No.	FHD-FAPB
Material	Steel, Powder-coated Black
Installing	FHD Rack Mount and Wall Mount Enclosure

Fiber Slack Spool

Effectively manage excess fiber cable slack, providing flexibility and the proper bend radius for cables. Features fiber retention tabs and fingers.



- Mounting quick and easy installation.
- Compact design provides slack storage in compact areas.
- Prevents microbends in fiber optic cable.
- Provides consistency and regularity in fiber optic loops.

Product Description

ID	#70752
Part No.	FHD-FMS
Material	ABS, UL 94V-0
Installing	FHD Rack Mount and Wall Mount Enclosure

Optical Splice Tray

Houses and protects fiber optic splices, guarantees proper fiber cable management and bend radius control, and allows for clear labeling and logical organization of the fiber optic splices. The fiber optical splice tray can hold and protect up to 24 fusion splices within FHD series rack mount fiber enclosures.



- Houses up to 24 mechanical splices.
- Self-stacking modules with side latches.
- Safely route and store optical fiber.
- Integral bend radius control.

Product Description

ID	#64246
Part No.	FHD-FOSMF-24F
Material	ABS, UL 94V-0
Installing	FHD Rack Mount Enclosure

Splice Tray Holder

Provides a location to hold and secure one/two fusion splice tray(s), ensures tightly integrates the enclosure and the splice tray.



- Secures the splice tray in limited-space areas.
- Ensures superior thermal insulation performance.
- The mounting holes provide added stability, easily installation.

Product Description

ID	#73717
Part No.	FHD-FWME-STH
Material	Steel, Powder-coated Black
Installing	FHD Wall Mount Enclosure



 <https://www.fs.com>



The information in this document is subject to change without notice. FS has made all efforts to ensure the accuracy of the information, but all information in this document does not constitute any kind of warranty.